

---

2024  
edition

---

# The definitive guide to life in the **Middle School.**

(Everything you **need to know.**)



WESLEY COLLEGE  
By daring & by doing

# Welcome to Wesley College Middle School.

This 'handy'  
handbook tells  
you everything  
(well, almost  
everything) that  
you need to know  
about life at  
Wesley College.

If you're in a hurry, there's an index at  
the back of this guide for easy reference.

Let's start  
with an  
overview...

## About us

The College motto, *By daring & by doing* (*Audendo Atque Agendo*): five simple words, yet so powerful. These words comprise the Wesley College ethos, a brief summation of who we are, and what our students and staff, working together, aim to do each and every day.

This spirit of challenging oneself to stretch and deliver the best they can, has been a part of the Wesley College fabric since the school was established over 100 years ago. Today, the College has 1,300 students from a broad range of metropolitan, rural and international backgrounds, including more than 160 boarding students from Australia and around the world.

Wesley College is located in South Perth, just a short walk from the beautiful Swan River foreshore. Our campus features a variety of historical buildings, as well as newer facilities added throughout the College's history. The Wesley College Chapel is a landmark, recognised by its unique octagonal shape and its soaring central spire. The College's elevated location offers stunning views of the Swan River from many of the campus' main buildings.

The Wesley College campus is home to three separate sub-schools, each with a slightly different focus based on the age and development of its individual students. Our Junior School offers a co-educational environment from Pre-kindergarten through to Year 4. The Middle School's learning environment is structured to suit early adolescent development; co-educational in Years 5 and 6 and then boys only in Years 7 and Year 8.

The Senior School comprises of a boys only setting from Years 9 to 12. Each sub-school's mentor/student teaching model varies slightly, but the end goal remains the same; to ensure that each Wesley student has all the necessary resources to develop to their full potential, from both an academic and a personal wellbeing standpoint.

## Who we are.

### Our motto

*Audendo Atque Agendo* translates to *By daring & by doing*.

### Our vision

Be an innovative learning community in which students are empowered to lead purposeful lives.

### Core values

Respect, Integrity, Compassion and Courage.

### Our mission

Be intellectually, physically and artistically engaging.

Be vibrant, caring and connected.

To strive for personal best and pursue excellence.

To honour our heritage and Christian foundation.

## Our crest

The **ESCALLOPS (SHELLS)** are religious symbols associated with pilgrimages or journeys. There are three to represent the Holy Trinity.

The **WYVERN** is a winged, two-legged dragon with a barbed tail that was part of the Wesley family crest. It is of medieval origin and has been adopted by a number of Methodist, and now Uniting Church institutions.

The **SWAN** is the emblem of Western Australia.

### WESLEY COLLEGE

*By daring & by doing*

The **MOTTO** *Audendo Atque Agendo* translates to *By daring & by doing*.

The **CROSS** is superimposed on the College crest, which is set within a shield, whose purpose is protection.

## Our faith

Wesley College has a full-time Chaplain, Reverend Manie Strydom, serving as a steady source of support and guidance for our students and wider community. The College operates under the auspices of the Uniting Church in Australia, and attendance at a once-per-week Chapel Service is mandatory for all students. This regular contact with the Chaplain ensures that our students come to know him and feel comfortable seeking support when needed. The Uniting Church is founded on Christian values; however, Wesley College welcomes student from all religions. The College has students from a variety of faith backgrounds, including Hindu, Muslim and Jewish.



# People to know.

---

## Need to talk?

We're here for you. Here is your easy guide reference for who to direct your enquiries to.

---



**Mr Ross Barron**  
Head of College

Mr Barron's Executive Assistant, Ms Kelli Henning can arrange meetings or appointments. Please email [kelli.henning@wesley.wa.edu.au](mailto:kelli.henning@wesley.wa.edu.au)



**Mr Nathan Jessup**  
Deputy Head  
(Operations and Pastoral)

Mr Jessup's Executive Assistant, Ms Cassandra Wild can arrange meetings or appointments. Please email [cassandra.wild@wesley.wa.edu.au](mailto:cassandra.wild@wesley.wa.edu.au)



**Mr Brad Hilliard**  
Head of Middle School

Mr Hilliard's office is near Middle School Reception, on the upper level of the Middle School Atrium. Call or visit Reception (speak to Ms Jennifer Hu or Ms Olivia Raison) or email [middle@wesley.wa.edu.au](mailto:middle@wesley.wa.edu.au)



**Ms Sarah Stone**  
Assistant Head of  
Middle School

Ms Stone can also be found in the Middle School Reception. If you would like to set a time to see her, please email [sarah.stone@wesley.wa.edu.au](mailto:sarah.stone@wesley.wa.edu.au)



**Mr Rodney Steer**  
Head of Boarding

Mr Steer's office is at the entrance of the Boarding House. To see Mr Steer, visit the Boarding House Reception, or email [boarding@wesley.wa.edu.au](mailto:boarding@wesley.wa.edu.au)



**Ms Tracey Coad**  
Director of Intervention  
and Extension

If you have individual learning needs or are a gifted student, Ms Coad will help. To make an appointment with Ms Coad, visit her in Maloney House or email [tracey.coad@wesley.wa.edu.au](mailto:tracey.coad@wesley.wa.edu.au)



**Mrs Sophie Carroll**  
Director of Student  
Wellbeing

Mrs Carroll is responsible for Student Wellbeing across the College. She is located in the Kefford Wing and can be contacted by email [sophie.carroll@wesley.wa.edu.au](mailto:sophie.carroll@wesley.wa.edu.au)



**Mr Stephen Roberts**  
Director of Arts

Mr Roberts is responsible for the Arts program. He is located in the Arts Office, Level 2 of the Joseph Green Centre and can be contacted by email on [stephen.roberts@wesley.wa.edu.au](mailto:stephen.roberts@wesley.wa.edu.au)



**Mr Luke Dwyer**  
Head of Sport

Mr Dwyer is responsible for Public Schools' Association (PSA) sport (Years 5 to 12). He can be contacted by email on [luke.dwyer@wesley.wa.edu.au](mailto:luke.dwyer@wesley.wa.edu.au)



**Mrs T'Ann Steel**  
Team Leader (Years 5/6)

Mrs Steel is the Team Leader for both Years 5 and 6. She can be found in the Middle School and can be contacted by email [tann.steel@wesley.wa.edu.au](mailto:tann.steel@wesley.wa.edu.au)



**Mrs Lucy Stuart**  
Year 7 Head of Year

Mrs Stuart is the Year 7 Head of Year. She can be found in the Middle School and can be contacted by email [lucy.stuart@wesley.wa.edu.au](mailto:lucy.stuart@wesley.wa.edu.au)



**Mrs Kay Simpson**  
Year 8 Head of Year

Mrs Simpson is the Year 8 Head of Year. She can be found in the Middle School and can be contacted by email [kay.simpson@wesley.wa.edu.au](mailto:kay.simpson@wesley.wa.edu.au)



**Ms Mary Henry**  
Director of Community  
Relations

Ms Henry oversees the Community Relations Team, which includes events, alumni, development, communications and enrolment. She can be contacted on [marketing@wesley.wa.edu.au](mailto:marketing@wesley.wa.edu.au)



**Mrs Helen Ewart**  
Health Services Manager

Mrs Ewart's office is in the Health Centre. If you would like to discuss health care or medication issues please call (08) 9368 8009 or email [helen.ewart@wesley.wa.edu.au](mailto:helen.ewart@wesley.wa.edu.au)



**Reverend Manie Strydom**  
College Chaplain

Reverend Strydom's office is located in the Chapel and all members of the Wesley Community are welcome to pop in. If you wish to make an appointment to see Reverend Strydom, please email [manie.strydom@wesley.wa.edu.au](mailto:manie.strydom@wesley.wa.edu.au)



**Mr Zachary Baldock, Ms Tegan Gmeiner,  
Ms Aoibheann McCarthy**  
College Psychologists

The College Psychologists apply their psychological and educational expertise to support staff, students and parents to help students achieve optimum outcomes academically, behaviourally, socially and emotionally.

The focus of the College Psychologists' work is to provide support where the presenting concern is impacting the student's school life. To book an appointment to see one of the College's psychologists please speak to your child's tutor, classroom teacher or Head of School, or email [psychs@wesley.wa.edu.au](mailto:psychs@wesley.wa.edu.au)





# WESLEY CAPABILITIES: THE 7Cs



WESLEY COLLEGE  
By daring & by doing

CAPABILITIES	DESCRIPTORS	IMPACTS
 CRITICAL THINKING	The ability to ask questions, analyse, evaluate and classify information, explain and justify ideas and solve problems.	 STRONG THINKER
 CREATIVITY	The ability to explore and generate new ideas, take risks and be resourceful.	
 COMMITMENT	The ability to demonstrate a consistent effort towards learning by planning and organising work, paying attention to detail and completing tasks.	 PURPOSEFUL DOER
 COMMUNICATION	The ability to publish work in multi-modes, develop individual voice and engage positively with digital technologies.	
 COLLABORATION	The ability to actively listen to others, build positive relationships and take on specific responsibilities in group situations.	 POSITIVE CONNECTOR
 CITIZENSHIP	The ability to serve others, demonstrate leadership and live the College values.	
 CONTINUOUS IMPROVEMENT	The ability to reflect and develop insights, set goals and pursue personal bests.	 POWERFUL SELF-ACTIVATOR

## The Wesley impact.

Wesley commits to supporting students as they become:

**STRONG THINKERS**, both academically and equipped with thinking skills that span learning areas. This impact focuses on academic achievement, critical and creative thinking.

**PURPOSEFUL DOERS**, as they apply and transfer their learning and act on their growing understanding. This impact focuses on performance traits, work habits, adaptive learning, innovation and communication.

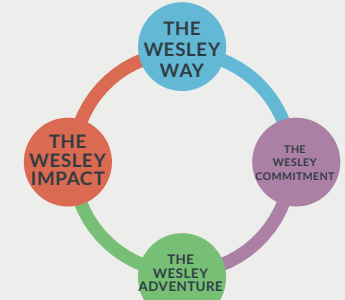
**POWERFUL SELF-ACTIVATORS**, who develop a strong sense of self, amplify their unique traits and become self-directed learners. This impact focuses on students assessing their individual capacities, developing self-awareness, and a sense of themselves as life-long learners.

**POSITIVE CONNECTORS**, engaging in local and global communities and acting on their values. This impact reflects a deeply held belief at Wesley that one of our main purposes is to collaborate, connect and empathise with others—understanding and engaging with the wider community.

To capture the College's strategic intent in action, we have developed the Wesley Capabilities—known as the 7Cs. These Capabilities are transferable skills for

student success in the 21st Century. Students demonstrate their proficiency of the Capabilities in both Academic and Non-Academic contexts.

Individual student data of the Capabilities is collected and visualised to demonstrate student growth throughout the schooling journey.



### THE WESLEY IMPACT

We are a future focussed, agile and resilient school that is continually innovating as we inspire our students to be creative, ethical and active global citizens, who are prepared to face the world.

### THE WESLEY WAY

We are a vibrant and inclusive Uniting Church School community that feels like a 'village'. Our core values of respect, courage, integrity and compassion are characterised by diversity and authentic relationships.

### THE WESLEY COMMITMENT

We strive for excellence in all areas of College life, demonstrating our commitment to providing students with a high-quality education that enhances personal best and growth.

### THE WESLEY ADVENTURE

We value a holistic education. We promote milestone experiences focussed on experiential learning, rites of passage, character development, social connections and foundational skills for life.

# A *to* Z



**DON'T START  
Term 1  
without  
reading  
this first...**



# A

## ABSENTEES

### Late arrivals

As soon as you know that your child will be absent from school due to illness or any other reason, please use the Schoolbox App, call the Middle School absentee line on (08) 9368 8182 or email: [middle@wesley.wa.edu.au](mailto:middle@wesley.wa.edu.au)

### Leave during the school day

When leaving campus during the school day, students must be with a parent or guardian and sign out through Middle School Reception.

Student appointments should be made outside school hours and sporting fixtures, wherever possible. If this is unavoidable however, a parent should contact Middle School Reception and a message can be passed on to their teacher. Parents can also email the child's teacher at: [middle@wesley.wa.edu.au](mailto:middle@wesley.wa.edu.au)

Parents must sign Year 5 to Year 7 students out at Middle School Reception and students can be released from class to meet their parent in Reception once notification has been received as outlined above. Year 8 students may sign themselves out, providing written notification has been received from the parent, either in note form or via email as outlined above.

### Leave during term time

Students taking leave during term time is strongly discouraged, especially at the end of term. Every week at school is an

important one for learning, assessment and revision.

Parents are requested to arrange family holidays during school holiday times. Apart from emergencies, written notification requesting leave for students during term time needs to be received no less than three weeks prior and should be addressed to the Head of Middle School.

Please be aware that staff should not be asked to offer alternative work or alter assessment schedules for students departing the College for holiday reasons. We appreciate your support in helping us maintain the continuity of your child's education.

### Music lessons

When a student is to miss a lesson due to illness, please advise the Arts Office on (08) 9368 8030 or email: [arts@wesley.wa.edu.au](mailto:arts@wesley.wa.edu.au)

Please note, all Music and Speech and Drama lessons are charged for unless there is a specific ongoing illness or injury of which the Arts Office has been made aware by the parents, or a school excursion whereby the instrumental tutor has been informed seven days prior.

Further details are available via the 'Music Tuition' tab, within the 'Arts' tab in the 'Beyond the Classroom and co-curricular' menu of Schoolbox (*please see the Communication Section from page 20 for more information on Schoolbox*) or in the Music section on the Middle School New Student webpage: <https://www.wesley.wa.edu.au/new-students-music/>.



# B

## BEFORE AND AFTER SCHOOL CARE

A before and after school service is available for children from three and a half years of age to Year 6.

The service is operated by Extend and is open from 7.00am-9.00am and 2.30pm-6.00pm every school day. For after school care, children join play leaders for afternoon tea and organised play under the supervision of Extend staff.

Out of school care is also available on pupil-free days and at end of term breaks. Bookings are essential for all sessions. Details are available on the Extend website: [extend.com.au/wesleyperth](https://www.extend.com.au/wesleyperth)

## BEHAVIOUR EXPECTATIONS

The College's expectations regarding student behaviour are informed by our core values of respect, integrity, courage and compassion. These expectations are to ensure that every member of the Wesley community feels safe, secure and supported.

The Student Code of Conduct broadly outlines the standards of behaviour expected of students. More specific details are contained within those College policies relating to student behaviour and pastoral care, which are accessible to students and parents via the 'College Services' tab on Schoolbox.





**REMEMBER:**  
The College canteen welcomes all students, staff, parents and members of the Wesley community!

## BOOKLISTS

College booklists are published on the College website at [wesley.wa.edu.au](http://wesley.wa.edu.au) and on Schoolbox. You will receive a notification in your Schoolbox Daily Digest once booklists have been released. New families will be emailed.

## C

### CAMPS

Please see Co-curricular section.

### CANTEEN

The Wesley Canteen provides a variety of nutritious and delicious food and drinks. The canteen area provides indoor and alfresco seating to all students, five days a week before and after school and at recess and lunch time.

The College Canteen works on a cashless system where students can use their SmartRiders to pay for their canteen items. Parents are able to review their child's purchases online, set a daily spending limit for their child/children and restrict the purchase of certain Wesley Canteen items.

Your student's canteen account can be topped up via 'My Canteen' in the 'Parent Services' menu in Schoolbox. **(Please see the Communication Section from page 20 for more information on Schoolbox).** Students may buy their recess and lunch from the school cafeteria.

Please note that on the last day of each Term (half days) the Canteen does not process lunch requests.

Here are some easy-to-follow steps on how to use Wesley's cashless canteen system:

## How to load funds

1. Log on to Schoolbox.
2. Click on 'My Canteen' in the 'Parent Services' menu and select the name of the student account in which you wish to deposit funds.
3. Click the 'Recharge Account' icon on the far right-hand side of the screen.
4. Enter the amount you wish to put on the card and click 'Next'.
5. Enter your credit card details (Visa or MasterCard) and follow the prompts. It will take at least 30 minutes before your child will be able to access the funds.
6. You will receive a payment receipt once the transaction is completed.

## How to manage your child's daily spend, restricted items and set an allergy alert:

1. Log on to Schoolbox.
2. Click on 'My Canteen' in the 'Parent Services' menu then click 'Manage Accounts'.
3. Select the account number you wish to manage.
4. The first screen is Daily Spend Limit, type the limit you would like to set here.
5. Click next, the second screen is 'Add Message', this message will appear at the point of sale when your child makes a purchase. This is where you add allergy alerts.
6. Click next, the third screen is 'Add Prohibited Items', this takes you to the canteen menu. Select any items that you do not wish your child to purchase.

## CODE OF CONDUCT

### Parents in partnership

At Wesley, we understand that parents are, and always will be, the primary educators of their children. We know that family involvement in the school community, including supporting and upholding the College values, standards and policies, has a positive correlation with student learning and behaviour. Therefore, we recognise that the work we do as a College is most successful when we operate in a true partnership between home and College and as such, we ask all members of the community (staff, students and parents) to act according to our Staff, Student and Parent Code of Conduct.

The Code of Conduct was developed in consultation with parents and staff. We ask all parents to familiarise themselves with the Parent and Student Codes summarised below and also available via the 'College Policies and Procedures' tab in the 'College Services' link on Schoolbox.

### Overarching Code of Conduct

Wesley College believes that all community members play a valuable role in the life of the College and have the right to feel safe, secure and supported in the community. The College also strives to nurture and uphold an inclusive culture where everyone feels a meaningful sense of belonging and connection.

Members of the Wesley community are expected to act in accordance with our Core Values of Respect, Integrity, Courage and Compassion, upholding the ethos and reputation of the College.

The Codes of Conduct apply to Council Members, staff, contractors, consultants,

volunteers, coaches, students, parents, OWCA members, relatives and guests of the College, whether in the College or attending any College-related function, event or activity at another location.

The Code of Conduct is outlined in three separate policies for staff, students and parents of the College. The Student Code of Conduct and the Parent Code of Conduct set out the expectations of the standard of behaviour required by parents and students as a condition of enrolment at the College. These Codes have been developed to ensure consistency with the (Child Safe Organisations) Example Code of Conduct, published by the Australian Human Rights Commission, and with the National Child Safe Organisation Principles.

The *College Council* is responsible for endorsing the Codes of Conduct.

The *Head of College* is responsible for ensuring all members of the College community are aware of the Codes of Conduct and for implementing the standards of conduct as set out within these Codes.

*Staff members* are responsible for respecting diversity, individual needs, cultural practices and beliefs of community members; providing an environment that encourages positive interactions; supporting constructive feedback; and providing guidance through positive role modelling and when appropriate, clear and respectful directions. Given that volunteers and contractors may not have access to the Staff Code of Conduct, staff are obligated to ensure that the activities of volunteers and contractors comply with the Code.

*Parents (including guardians, step-parents and carers)* are responsible for supporting the efforts of the College in maintaining a safe and respectful learning environment for all students and in modelling the College's core values. Parents fulfil this responsibility through respectful communication and engagement with College teachers and staff around their child's progress at school (includes supporting the College in matters of punctuality, absence, late arrival or early departure, behaviour and dress standards) and with staff and other parents around College events, activities and otherwise.

*Students* are responsible for treating all members of the College community with respect; upholding the rights of their peers to be educated in a safe learning environment; maintaining the highest of standards (dress, behaviour, punctuality, engagement, achievement, participation); representing the College in all activities in a manner that is consistent with the College's core values.

*Members of affiliated and support groups* are responsible for ensuring that the aims of their group and its practices are consistent with the Codes of Conduct.

*OWCA members* are expected to support the College in upholding the ethos, reputation and values of the College. In doing so, members are required to comply with the Codes of Conduct in all their interactions with the College whether on campus or when attending a College-related function, event or activity at any other location.

Any College community member who invites a *relative, friend, supporter, carer or other person (adult or child)* to



be present at a school related function or activity at any location is responsible for that person and must ensure that they are aware of the expectations outlined in the Codes of Conduct.

## COMMUNICATION

While Wesley College promotes the practice of students being responsible for dealing with matters that affect them on a day-to-day basis, there might be times when you feel you need to contact a member of staff.

### Between the College and parents on individual basis

Full cooperation between staff and parents is essential if the education process is to be effective and relevant. With this in mind, parents are encouraged to initially discuss concerns about an individual student with a student's Middle School Tutor. If attitude or behaviour deteriorates markedly, or the standard of work drops suddenly, it is expected that contact with the parents

will be made by the subject teacher, Middle School Tutor, Assistant Head of Middle School or Head of Middle School. We urge parents to communicate with us about matters which may affect the overall wellbeing of our students such as medical issues, or a change of circumstance at home.

### Messages for staff and students

If you need to contact a staff member, it is recommended that email is the first option—send to staff member using this format:

**firstname.lastname@wesley.wa.edu.au**

Messages for staff and students may be left at Middle School Reception. These will be delivered as soon as is practical. All incoming calls must be directed through Middle School Reception at (08) 9368 8011.

Email alternatives are a useful option if the matter is not urgent. Please note that email may not be accessible everyday by all classroom teachers.





## Schoolbox

Schoolbox is the digital home of the College, combining a virtual learning environment for students, an internal intranet for finding relevant information about College Services and a communication platform for staff, students and parents.

Information you can find on Schoolbox includes news, student reports, calendar updates, general course information for staff, students or parents, information on particular events, activities or services, year group pages and the ability to update personal and contact details.

New families will be provided with their login details in January.

To log into Schoolbox visit:

**<https://schoolbox.wesley.wa.edu.au>**

Your parent login uses your Wesley ID number in the following format: WES12345@wesley.wa.edu.au. Please note that separate logins are created for each parent in line with your unique ID numbers.

As part of our ongoing commitments to ensure the highest standards of security, parents will be required to change their password every twelve months.

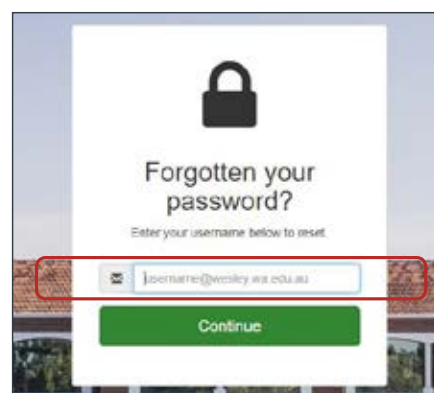


Passwords must align to the password policy which is:

- Minimum 8 characters
- Contains at least 3 of the following:
  - > Numbers
  - > Uppercase characters
  - > Lowercase characters
  - > Special characters (e.g. \$ ^ & \*)
- Different to all previous passwords
- No deterministic passwords (e.g. 'Wesley2020', names, dates etc.)
- No common passwords (e.g. 'P@ssw0rd')
- No common substitutions (e.g. @ for a)

### How parents may reset their password

If you have forgotten your password, please visit <https://reset.wesley.wa.edu.au>. A code will be sent to the registered email or mobile phone number for your account which will allow you to reset your password.



### How parents may change their password

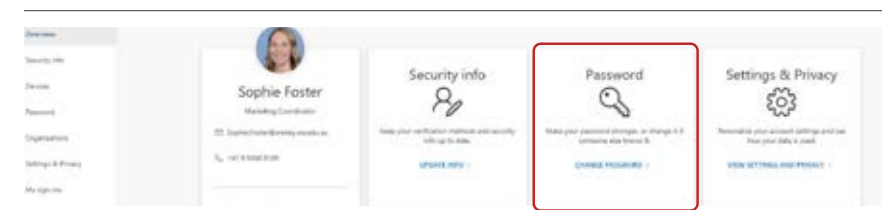
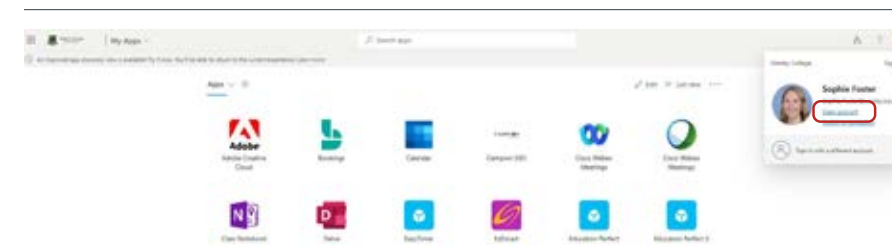
- Go to [myapps.microsoft.com](https://myapps.microsoft.com)
- Click on your name in the top right
- On the dropdown that appears, Click 'view account',
- Click on the 'change a password' box on the next screen.
- Enter a new password which conforms to the password policy found on page 22 in the handbook.

### Download the Wesley College Schoolbox App

Access all of Schoolbox's great information in a handy mobile application.

To download the Wesley College Schoolbox App, follow these easy steps:

1. Visit either the Google Play Store or Apple App Store (depending on your device).
2. Search for 'Wesley College' and look for the Wesley College Crest.
3. Download the App and login using your WES12345@wesley.wa.edu.au credentials.



### change password

User ID  
joe.elliott@wesley.wa.edu.au

Old password

Create new password

Confirm new password

Please note: If you have a Windows laptop issued by Wesley, please do not use this method to change your password.

Please contact the ILT Help Desk at: [iltsupport@wesley.wa.edu.au](mailto:iltsupport@wesley.wa.edu.au) or phone (08) 9368 8083.



### Login problems

From time to time, parents may have login or access problems. The fastest way for this to be rectified is to email the ILT Help Desk at: [iltsupport@wesley.wa.edu.au](mailto:iltsupport@wesley.wa.edu.au) or phone (08) 9368 8083.

### Schoolbox calendar

The Schoolbox calendar contains details of College events and parents are encouraged to check this regularly. Additional events are updated on the calendar throughout the year.

### Student data

Schoolbox is regularly enhanced to provide parent access to student data. Parents can access student timetables, online reporting, online booking of parent/teacher interviews, access to accounts information and more.

### View your current contact details

Parents are able to view their current Wesley contact details through Schoolbox, check that they are correct and request a change if required. Go to

Schoolbox 'Parent Quicklinks', 'My Data' to view, or make changes.

### Daily Digest Email






The Daily Digest email is the primary method of communication between the College, Parents and Students. It collects all the relevant news from Schoolbox for you and your child and combines them into one email, which is emailed at 5.00pm—Sunday to Thursday to the email addresses you submitted at enrolment. If you are not receiving a Daily Digest email from the College please contact the Schoolbox Help Desk on the email address below.

Year Group and Middle School Specific News is uploaded by the teachers and the Middle School administration staff. You will also find yourself subscribed to other pages within Schoolbox, such as Sport, Arts, P&F and much more.

If you need any help with Schoolbox, please email: [schoolboxhelp@wesley.wa.edu.au](mailto:schoolboxhelp@wesley.wa.edu.au)

### Social media channels

If you haven't already, be sure to follow our official social channels to stay up to date!

-  [fb.com/wesleycollegeperth](https://fb.com/wesleycollegeperth)
-  [@WesleyPerth](https://twitter.com/WesleyPerth)
-  [@wesleycollegeperth](https://www.instagram.com/wesleycollegeperth)
-  [Wesley College, Perth](https://www.linkedin.com/company/Wesley College, Perth)
-  [vimeo.com/wesleycollege](https://vimeo.com/wesleycollege)

## CO-CURRICULAR

A quality education demands a balance between every aspect of school life. The diverse co-curricular programs at Wesley College not only complement and broaden the day-to-day curriculum but also offer further opportunity for

skills development, creative expression, innovation and teamwork.

The diverse opportunities offered at Wesley facilitate the personal development and transformation of the whole person as students become Strong Thinkers, Purposeful Doers, Positive Connectors and Powerful Self-activators.

The activities offered across Middle School provide a unique range of learning experiences and opportunities for students to become active and engaged learners who strive to achieve their personal best. Each co-curricular activity provides students with unique leadership opportunities that are developmentally appropriate; and personalised feedback





from teachers and coaches assist students as they develop technical skills, attend to non-cognitive skills and build a desire for lifelong learning.

At Wesley, we offer a rich array of co-curricular activities and experiences in the following domains: Academic Afternoons, Arts, Oratory and Literary Pursuits, Cultural Engagement Activities, Outdoor Learning, Service Learning and Leadership, Sport and STEAM Challenge. In all of these domains, Wesley celebrates student social and emotional learning commitment, leadership, service and excellence. For further information please refer to the 'Other Co-curricular Activities' tab in the 'Beyond the Classroom and Co-curricular' menu of Schoolbox.

### **Academic Afternoons**

Additional tutoring and academic support is offered to all students through a variety of after school activities. These include homework support in English/Humanities and Mathematics/Science for Years 7 & 8 and Homework Club for Years 5 & 6. For further information please refer to the 'Academic Afternoons' page in the 'Classroom and Curriculum' menu of Schoolbox.

### **Arts**

Wesley offers a diverse and exciting range of arts activities across the Junior, Middle and Senior Schools. From Choral Speaking to outstanding Drama Productions and a range of Music Ensembles, there is something for everyone. Wesley College has a team of specialist music teachers, many of whom



perform with professional orchestras and bands, who run the College ensemble program. These activities are open to all students within the College and students are encouraged to seek out arts activities.

### **Cultural Engagement**

Wesley is a connected community that encourages all students to engage in the cultural life of the College. This includes active participation in the House system, engaging in out of school activities and representing the College by taking part in national and international tours.

The cultural life of the school manifests itself in our academic program, assemblies, Chapel, special events, extra-curricular activities and parent engagement. Regular cultural, language, community service and sporting tours

are a feature of our diverse cultural engagement program.

### **Long-Term Athletic Development (LTAD)**

Wesley College is committed to the learning success of every student. The College wishes to see all students become Strong Thinkers, Purposeful Doers, Powerful Self-activators and Positive Connectors. To this end, Wesley has embarked on an exciting new sporting endeavour, the Long-Term Athletic Development and High Performance Program.

Driven by a 'Sport for Life' culture from Pre-kindergarten to Year 12 that recognises the flow on benefits of exercise to successful learning, all students will have access to this new program. The program includes



intentional skills acquisition in the Health and Physical Education Australian Curriculum, strength and conditioning programs, training and competition development and high-level mentoring programs for aspiring and elite athletes. This program is a first among PSA schools, and in fact, in all of WA. It is Wesley's unique response to championing a holistic sporting and health education for all students.

### LTAD Framework

It is recognised that the building blocks of sporting development starts in Pre-kindergarten to Year 4 with a focus on foundations, participation, motor skills and core strength. As students progress through the years towards specialisation in specific sports, they have access to differing and personalised training modes and mentoring. Strength and conditioning, health and nutrition education and load management is a focus at all levels to reduce risk of injury.

As students self-select and follow sporting excellence pathways, they require mentoring to navigate competing priorities both in and out of school. Elite athletes are given access to individual mentors to assist them in communicating with all stakeholders to manage their training, wellbeing, academic and competition needs.

To hear more about the program and for costs and sign up information, please refer to the 'Long-Term Athletic Development Program' tab in the 'Beyond the Classroom and Co-curricular' menu of Schoolbox.

## Music tuition

Instrumental music is an important part of the total music program at Wesley. The College has a large and diverse instrumental music tuition program with over 500 students throughout the school learning a wide variety of musical instruments. The instrumental music program at Wesley engages professional music specialists who provide a diverse range of instrumental tuition.

### Conditions of learning

Instrumental lessons are given once a week, on a rotational basis, during school hours. Before and after school lessons are exclusively reserved for senior students (Year 11 and Year 12) and the Year 8 Katitjin participants. Please be aware that outside of school hours' lessons are given at the individual teacher's discretion and cannot be guaranteed through the registration process. Music lessons differ in duration through the sub-schools. Year 6 students are allocated a 30-minute lesson. Years 7-8 students can elect to receive a 30 or 40-minute lesson. It is the student's responsibility to be at lessons on time and the tutor is under no obligation to make up the lesson if insufficient or no notice of absence is given.

When returning from an Individual Music, Speech and Drama lesson, students must sign in at the Arts Office or Middle School Reception before returning to class.

If a student wishes to learn more than one instrument within the school they may only do so with the express permission from the Head of Music in consultation



with the Head of Middle School. One lesson will, wherever possible, be placed outside the academic timetable (e.g. during lunch or recess or before/after school if possible).

Instrumental teachers can be contacted through the Arts Office, via email: [arts@wesley.wa.edu.au](mailto:arts@wesley.wa.edu.au) or through the student music diary. Please note that we cannot give teachers' phone numbers to parents, but are happy to pass on messages on your behalf. If you wish to meet with your child's teacher, we will do our best to arrange this.

Any questions or concerns regarding instrumental tuition should be referred to the Head of Music.

### Ensembles

Supporting the instrumental tuition program is a wide-ranging ensemble

program that includes orchestral, jazz, vocal and smaller ensembles. Involvement in any one of these ensembles has been proven to enhance students' music skills and experiences and your child/children are encouraged to take part. Membership is conditional upon the students undertaking instrumental tuition, a successful audition and a commitment to remaining involved in the ensemble throughout the year, including rehearsals and performances.

Ensembles run from Term One each year, with auditions held at the end of Term Three in the previous year. Major performances are organised into concert seasons to minimise the impact on the academic program. Other performances include community events, festivals and eisteddfods. In addition, national and

international tours provide unique and outstanding extension opportunities.

All ensemble rehearsals will be offset with sports training days. In this way it is hoped that conflicting schedules will be minimised. A full rehearsal schedule for all ensembles is published at the commencement of each year and is available via the 'Music Ensembles' tab within the 'Arts' page on Schoolbox. Generally, Middle School ensemble rehearsals are in the mornings. Rehearsals are compulsory and permission to miss rehearsals can only be given by the various ensemble directors or the Head of Music.

#### Instrument hire

The College has a large number of instruments available for hire. A hire fee of \$130 per semester applies, which contributes toward the general upkeep of these instruments. This fee does not cover the cost of replacement strings, valve oil, reeds or the like, or instrumental damage. Most accessories can be purchased through the Music Office and charged to your College account. There is no instrument hire fee associated with the Year 5 Band Program.

Please note that the following instruments are not for hire from the College: drum kit, full size violin, acoustic and electric guitar, percussion and piano. Once a student demonstrates an ongoing commitment to their instrument, parents are encouraged to purchase their own, in consultation with the instrumental tutor.

#### Registration

Students wishing to commence instrumental tuition must complete a separate music registration form. Instrumental tuition consists of thirty-four lessons per year. Lessons are billed at eighteen lessons for Semester One and sixteen lessons for Semester Two. Instrumental lesson fees are payable in advance each semester. Music tuition fees will be included in your fees statement.

Advice for cessation of lessons is required in writing before the end of Week 8 of each term. Failure to do so will result in the payment of one full term's tuition.

Tuition is available on the following instruments: flute, oboe, clarinet, bassoon, saxophone, French horn, trumpet, trombone, euphonium, tuba, violin, viola, cello, double bass, percussion, drum kit, drums, electric guitar, classical guitar, bass guitar, piano, pipe organ, composition and voice. Further details are available via the 'Music Tuition' tab, within the 'Arts' tab in the 'Beyond the Classroom and Co-curricular' menu of Schoolbox.

#### Moorditj Mob

Founded in 2006, The Moorditj Mob is our program for Indigenous and Torres Strait Islander students. In the Nyoongar language, Moorditj means 'great', 'strong' or 'excellent', and our students take great pride in celebrating their history and culture through dance and music. To find out more, contact our Indigenous Coordinator, Mr Dan Barnes, on [dan.barnes@wesley.wa.edu.au](mailto:dan.barnes@wesley.wa.edu.au).



#### Oratory and literary pursuits

Oratory and Literary pursuits at Wesley offer students a wide variety of experiences from debating to chess and book club. Students are encouraged to develop team work and leadership skills as they navigate complex issues, construct arguments and analyse texts. Further details are available via the 'Oratory and Literary Pursuits' tab in the 'Beyond the Classroom and Co-curricular' menu of Schoolbox.

#### Outdoor learning

Outdoor Learning and Education at Wesley College aims to build students individual resilience and life skills for a sustainable future in the great outdoors. Students are primed for learning experiences that are developmentally and physically appropriate, challenging and enriching both their personal growth and the growth of others around them. Outdoor Learning and Education

camps are not a vacation, rather rich multi-faceted learning experiences that place heightened expectations on collaborative work, positive relationships, problem-solving, understanding of the environment and survival, self-actualisation and leadership.

Camps from Years 5-10 are constructed using a scope and sequence of skills and dispositions that require different levels of 'front loading' from staff, personal exploration and collaboration. All camps are connected experiences overtime and represent a collective Outdoor Learning and Education experience whereby students are prompted to reflect and connect one learning experience to another. In reflecting, students are required to name and articulate significant milestones of personal achievement and growth, and individual pathway shaped by their unique experiences in the outdoors.



## Student Wellbeing Approach

The Wesley Student Wellbeing Approach is not a standalone program, rather an extension of our whole-College philosophy to understand and grow each individual. With a focus on developing belonging and connecting students to purpose, the Wesley Student Wellbeing Approach is embedded in everything we do. To achieve this a series of partnerships have been established in the areas of Respectful Relations, Online Safety and Mental Health. Student, staff and parent co-design has been central to this work, in which our expert delivered Interactive Student Workshops are supported by pre/post lessons, resources and information for use by teachers and parents.

Extending the whole college approach, the wider Wesley Community plays perhaps the most important role in connecting our history, networks and positive societal influence into the holistic development of our students. Through this integrated model, the Wesley Student Wellbeing Approach strengthens both individual and collective ability to adapt, thrive in and shape society both now and in the future.

## Speech and Drama Tuition

Speech and Drama is offered to students in Years 5-12 and has proved a popular co-curricular activity. Students interested in improving their speaking skills, developing general confidence when speaking in front of an audience or wishing to improve drama performance skills may enrol in this course.

All students are required to sit AMEB exams in either 'Speech and Performance' or 'Voice and Communication'. Opportunities are also given to students who wish to compete in Speech and Drama Festivals.

Further details are available on the 'Arts' tab in the 'Beyond the Classroom and Co-curricular' menu of Schoolbox. A registration form needs to be completed and students are enrolled on a first come/first served basis. The lessons are rotational with students coming out of class to attend. It is required that if a child does not attend a lesson, then notification must be given to either the Speech and Drama Specialist or the Arts Office. Charges will apply should insufficient or no notice be given for lesson cancellation. Advice for the cessation of lessons must be received before the start of term or a full term's fees will be charged. Speech and Drama fees will appear on your school fees statement.

## Sport

Sport is compulsory at Wesley. Participation in sport provides life skills beyond the enjoyment of the sport itself, including teamwork and developing healthy and active lifestyle habits which we hope will endure. Wesley students participate in before and after school sports training and competition against other Public Schools' Association (PSA) schools. Inter-School fixtures are typically held on Thursday afternoons for Years 5-6 and Friday afternoons for Years 7-9.





**Years 5–6****Summer**

Basketball

Cricket

Tennis

Volleyball

Water Polo

**Winter**

AFL

Hockey

Rugby Union

Soccer

**Years 7–8****Summer**

Basketball

Cricket

Rowing

Swim Sport (2nd sport Hockey only)

Tennis

Volleyball

Water Polo

**Winter**

AFL

Badminton (from Year 8)

Cross Country

Rugby Union

Soccer

*\*NB - For Year 7, Rowing occurs in Term Four only.*

**Sport Selection and Expectations**

Some sports may require the additional purchase of specific uniforms and/or equipment. All participants must have the required equipment.

All students in Years 5–8 are required to select and participate in a Winter and Summer Sport. Choices are made on a preferential basis (refer to the sport selections sheet). Every effort is made to give students their first choice of sport. However, sometimes it may be necessary to allocate students to their second preference.

**Training and competitions**

Students are expected to attend training sessions for sport unless alternative arrangements are approved by the Head of Sport. Years 5 and 6 usually train on Monday or Tuesday and Years 7 and 8 usually train on Monday or Wednesday mornings or afternoons.

Year 5 and Year 6 compete in the JPSSA on Thursday afternoons and Years 7 and 8 participate in the PSA competition on Friday afternoons.

Information regarding details for all sport, including venues and transport arrangements, is available via the 'Sport' tab in the 'Beyond the Classroom and Co-curricular' menu of Schoolbox.

**Change of sport selection**

Some students' tastes and preferences for particular sports may change during the year, or after initial selections have been made. When this is the case, a change of sport application is reviewed and may be granted within the first few weeks, but only after seeking the approval from the Head of Sport in order to ensure that administrative procedures are followed.

The Summer Sports season is conducted over two Terms, starting in Term One and continuing in Term Four. Generally, students are expected to remain in the same Summer Sport for both. The Winter Sports season takes place over Term Two and Term Three.

## Details of sports

### Athletics

The Athletics season runs for a three-four week period at the completion of Winter Sport during the second half of Term Three. It is a very intensive season that culminates with the College participating against the other PSA schools in an all-day carnival. A week prior to this competition, a quadrangular competition is held involving Wesley College, Scotch College, Guildford Grammar School and Christ Church Grammar School. Participation in Athletics is not compulsory but strongly recommended.

### Australian Rules Football

Football training takes place either on Rossiter Oval (the main College oval) or off-campus at various venues close to the College. Students are transported via bus to and from all external venues.

### Badminton

Badminton training is held in the Wesley College Gymnasium and TG O'Sullivan Pavilion.

### Basketball

Basketball training takes place either at Wesley College or off-campus at various venues close to the College. Students are transported via bus to and from all external venues. Training may take place before or after school.

### Cricket

Cricket training is held on the Wesley College campus, however some fixtures may be held at Collins Oval or other community grounds.

### Cross Country

At PSA level, Years 7 - 9 students form a combined team to contest Friday afternoon races against other PSA schools on a home and away basis. Training takes place either at Wesley College or at Sir James Mitchell Park.

### Hockey

Hockey training takes place at Wesley College or off-campus at various venues close to the College. Students are transported via bus to and from all external venues.

### Rowing

Rowing is a co-curricular option for all Year 7 students in Term One, running on alternate afternoons to their Summer Sport selection. With rowing being a sport the majority of boys would never have attempted, we allow everyone an opportunity to try it out before selecting it as a Summer Sport option in Term Four of Year 7.

Year 8 rowing is largely non-competitive, however where possible we find opportunities for the boys to represent the College in a competitive setting. To maximise flat and safe conditions, training for Year 8 students is a combination of morning and afternoon sessions with an option to compete on Saturday during Term 1.

The Wesley College boatshed is located at Sir James Mitchell Park at the northern end of Coode Street.

### Rugby Union

Rugby training takes place at Wesley College on Ward Oval.

### Soccer

Soccer training takes place either at Wesley College or off-campus at various venues close to the College. Students are transported via bus to and from all external venues.

### Swim Sport

Swimming at Wesley is held in the Wesley College pool. Swimming is largely directed at producing teams for Inter-School competition. Swimming in Years 7-12 can be chosen as a second sport.

Year 7 and 8 students wishing to simply improve their technique, endurance and confidence in the water are also encouraged to become involved.

### Tennis

Tennis training takes place either at Wesley College or off-campus at various venues close to the College. Students are transported via bus to and from all external venues.

### Volleyball

Volleyball training is held on the Wesley College campus in the TG O'Sullivan Pavilion or off-campus at various venues close to the College. Students are transported via bus to and from all external venues.

### Water Polo

Water polo training is held in the Wesley College pool.

### Bus Travel

Many of the competition and training commitments are off-campus, with buses required to transport the students

to and from venues. In addition to the facilities at the College, Wesley sport is also conducted at a range of external venues. Students who have a prior arrangement with their parents to be picked up from the venue, will be transported back to school if their parents have not arrived at the time of bus departure. Students will not be left unaccompanied at a remote venue.

### Clothing

Students participating in co-curricular activities must wear the designated uniform. With respect to sport, any item that is not part of the College sport uniform or is part of the normal day uniform is not acceptable. The purchase of the College tracksuit is a requirement. All requirements are stipulated in the Uniform section of the handbook.

### Safety

It should be noted that, where possible, matches are modified to suit the age and experience of the participants.

Parents and students should be aware that some sports (particularly the Winter Sports) require the use of personal protective equipment, such as mouth guards or shin pads. Students will be informed of exact requirements but it should be noted that they are not permitted to participate, either at training or in matches, unless the minimum safety standards are met. If first aid treatment is required, services organised by the Wesley College Health Centre staff are available both on and off campus.



### Student Absenteeism from Sport

Students who do not fulfil a training or competition commitment without providing a medical certificate or adequate written or verbal explanation from a parent or guardian may receive a detention. Students who are continually absent will lose the privilege of inclusion in that particular sport and will have a sport chosen for them by the Head of Sport. If absenteeism continues to be an issue, a meeting with the Head of Middle School, Head of Sport and parents will be arranged.

### STEAM Challenge

Wesley promotes STEAM activities and the disciplines of Science, Technology, Engineering, Arts and Mathematics. Our co-curricular offerings include Chess, Coding Clubs, Daring Tinkers, EV challenge, F1 challenge and Mathematics Enrichment. Using an inquiry approach, students develop thinking and problem-solving skills and apply them in different contexts. Students are encouraged to work in groups and prepare specific solutions to problems posed in sessions.

## G

### GETTING TO AND FROM WESLEY

#### Drop off and pick up areas

##### Middle School

The majority of Middle School students use the Swan Street entrance and parents are encouraged to drop their child off

and then move on, being mindful of the traffic flow and with consideration for other families and members of the Wesley community. Students are required to only exit the car between the zebra strips to allow for safety and flow of cars. If required, parents are permitted to park in designated bays if they have official school business to attend.

##### Buses

Along with Swan Transit (Transperth) service buses and special service buses, Wesley College also offers a shuttle bus to the Attadale/Bicton, Canning Vale/Shelley/Rossmoyne, Mount Lawley/Yokine and Perth Hills areas. These are not Wesley College buses, but are operated by a private bus company—these buses are not supervised. Students are able to use their SmartRider to swipe on and off the Horizons West buses. Bus rides cost \$2.50 per trip. Parents will be able to load funds to their child's account via [www.horizonswest.com.au/eticketing](http://www.horizonswest.com.au/eticketing).

Further information regarding bus pick-up/drop-off points and times are available in the 'Bus Routes and Timetables' tab, in the 'College Services' menu on Schoolbox or on the College website here: <https://www.wesley.wa.edu.au/buses>. For additional information, please contact Central Reception: (08) 9368 8000 or email: [wesley@wesley.wa.edu.au](mailto:wesley@wesley.wa.edu.au)

##### Bikes

When riding bicycles to and from school:

- An approved, safety standard helmet must be worn.
- An appropriate locking chain must be used for security in the bike rack area.
- Bicycles should be walked to the bike rack areas, which are located next to the Uniform Shop on Angelo Street entrance and near the Year 5–6 playground on Hanton Quadrangle, as well as between the Transition Building and Junior School (refer to the Campus Map on page 70).

## H

### HAIR AND DRESS STANDARDS

All students are expected to take pride in their personal appearance and in the wearing of the correct school uniform and sporting attire. Standards of presentation need to reflect high personal and community standards. Students should remember:

- Hair must not be dyed beyond its natural colour.
- Hairstyles must be kept neat, clean and well maintained.
- Boys' hair must be kept as short as is necessary for it to be tidy throughout the school day and to a length that exposes eyes, ears and collar.
- Girls' hair should be tied back once it reaches the collar of the uniform. Only black or dark green ribbons, headbands or scrunchies are to be worn. Clips, if required, must be clear

or tortoiseshell in colour and blend in with the colour of the child's hair.

### HEALTH CENTRE

The Health Centre, located at 46 Swan Street (adjacent to the Boarding House and opposite the tennis courts) is staffed by experienced Registered Nurses and is open during school terms from 8am–6.00pm, Monday to Friday.

Contact information can be found at the back of this handbook.

### Medical information

All medical information is kept in strict confidence. Please complete relevant medical information updates and consents as soon as possible by accessing the 'Medical' tab available on your students' page on Schoolbox.

### Medications

If your child requires medications to be administered during school hours, please deliver the medication in its original pharmacy container with clear prescription details, and complete the 'Permission for the College to Administer Medication' form on Schoolbox. Instructions for this process are found on the Health Centre Schoolbox page. A consent form is required for any medication to be administered at school or at school activities.

### Illness

Please do not send your child to school unwell. If a student becomes unwell during class time, the student is required to obtain a permission slip from Middle School reception to attend the Health

Centre for review. If a student is unfit to return to class, or has sustained a significant injury, parents will be notified to collect the student from the Health Centre.

Your promptness in collecting your child is always appreciated as we cannot facilitate keeping students for extended periods.

### **Anaphylaxis management**

Anaphylaxis is the most severe form of allergic reaction and is potentially life-threatening. Information for a student who suffers anaphylactic allergies must be passed on to the Health Centre staff as soon as possible.

Wesley College follows the guidelines of the Australasian Society of Clinical Immunology and Allergy Inc which recommends risk minimisation regarding peanuts and tree nuts but does not recommend the implementation of blanket food bans or attempts to prohibit the entry of specific food substances into schools. Wesley College is not a nut free school.

Parents are required to supply the following to the Wesley College Health Centre:

- a current ASCIA Action Plan for Anaphylaxis, signed by the treating doctor
- a current EpiPen and any other medication prescribed for allergy/anaphylaxis episodes
- accurate health information regarding the child
- replacements for expired or used EpiPen's

A copy of the student's ASCIA Action Plan for Anaphylaxis, EpiPen and other relevant medications will be placed in labelled anaphylaxis kit and kept at the Health Centre. Wesley College Health Centre staff will add the students' most recent school photograph to the ASCIA Action Plan for Anaphylaxis provided. Students may be exempted both from on-site and off-site activities if a current EpiPen and ASCIA Action Plan for Anaphylaxis are not available.

Students must collect and sign out their anaphylaxis kit from the health and carry the kit when going off-site for any College activity. Students will not be able to attend excursions or sport without their kit. For camps and remote excursions anaphylactic students will need to take two EpiPens (one from the Health Centre and one from home).

### **Asthma management**

All students who present with symptoms of Asthma will be treated with Asthma First Aid as recommended by Asthma Australia, unless the Health Centre is advised of special requirements for individual students.

Parents/Guardians of students with Asthma must provide a current Asthma Action Plan to the Health Centre.

Middle School Students should carry a copy of their Asthma Action Plan and any medications for Asthma with them.

Wesley College staff members are trained in the provision of Asthma First Aid and retraining is arranged through the Health Centre as required. Asthma reliever medications are contained in all College First Aid kits.



### **Immunisation**

Each student's immunisation status is required by the finalisation of their enrolment at Wesley College. The College must receive a copy of each student's Immunisation History Statement which is less than two months old, as per Western Australian Health, Education and Training guidelines. Parents may gain access to this data by logging into Medicare online via MyGov (<https://my.gov.au>); visiting a Medicare or Centrelink office or calling AIR General Enquiries Line on 1800 653 809. If your child was vaccinated overseas, their records must be verified by an Australian Immunisation provider, which may take several weeks. Information can be accessed on [healthywa.wa.gov.au/immunisation](https://healthywa.wa.gov.au/immunisation)

In the case of communicable diseases within the school community, local Population Health Units will advise Wesley College of the planned response to individual cases or outbreaks of infectious diseases. Decisions about exclusions (from school) are made in consultation with the local Population/Public Health Unit and are based on the 'Communicable Disease Guidelines' For teachers, childcare workers, local

government authorities and health practitioners (Department of Health, 2023). If Wesley College has not received a student's immunisation data, the child is likely to be excluded from school until this information is received.

Please note: Where the parent or guardian makes a conscious, informed decision not to immunise their child, please be informed that if a case of a communicable disease arises in our school community, the child is likely to be excluded from school for a set period.

The College may also exclude a non-immunised student from an activity or program such as an excursion, camp or tour (inter-state or international), if it deems that their involvement may compromise the safety and/or duty of care of the child or other participants.

### **HOUSE SYSTEM**

All students belong to a House. There are six Houses in Pre-kindergarten to Year 8 and eight Houses in Years 9 to 12. Students will normally remain a member of that House for the duration of their time at Wesley. Some of the Houses were part of the College's foundation years while others have been created as the College has grown. Each House seeks to



develop strong links with the families of its students.

Boarders are placed in one of the two Boarding Houses from Year 9 onwards, while in Year 7 and Year 8 they are placed in a day House to assist with their integration into the College. From Year 5, the House begins to play a vital role in providing support and guidance to a student as they move through the College.

Middle School students participate in a variety of House activities that culminate in the Kay Cup. The Kay Cup was first presented in 2015 and named in honour of Mr Geoff Kay, our inaugural Head of Middle School from 1999–2014.

### Dickson House (Red)

Established 1968

Dickson House is named in honour of one of the founders of the School, Mr Alexander Hunter Dickson, whose daughter, Miss Lorna Dickson, was associated with Methodist Ladies' College, Claremont.



### Grove House (Green and Gold)

Established 1990

Grove House is named in honour of Reverend J W Grove, appointed the Superintendent of Central Methodist Mission in Perth in 1920. Reverend Grove joined the committee appointed by the Methodist Church to establish a boys' college in 1922 and was the first Chairman of the Wesley College Council (1924–1929). While Chairman, Reverend Grove served the College as Chaplain and in 1929 became Principal of Methodist Ladies' College in Melbourne.

### Hardey House (Black)

Established 1924

Hardey House is named after Joseph Hardey, who was one of the first Methodists to settle in WA. It also commemorates Sarah Hardey, who assisted the Methodist Church in WA to acquire the site of Wesley College in South Perth.

### Jenkins House (Black and White)

Established 1990

Jenkins House commemorates Reverend Charles A Jenkins, Chairman of Wesley College from 1929–1937 and his nephew, Reverend Sydney John Jenkins, Chairman of the College Council from 1967–1978. Reverend Syd Jenkins' brother, George, was also a prominent Methodist minister in WA.

### Mofflin House (Gold)

Established 1924

Mofflin House is named after Horace E Mofflin, an early benefactor, who also contributed to the foundation of Mofflin Homes in Victoria Park.

### Walton House (Green)

Established 1924

Walton House is named after James P Walton. His daughter, Miss Gertrude Walton, was a former Head-mistress of Methodist Ladies' College, Claremont. His grandson, Mr E Walton, FCA Hon TCL, was a member of the College Council for many years.

## J

### JEWELLERY

Students are not permitted to wear the following:

- Rings on fingers
- Bangles, bracelets and leather wrist bands
- Neck chains or necklaces

Exceptions will be made for Medic Alert bracelets and religious symbols discretely worn on a plain chain.

Girls may wear plain gold or silver studs in both ears.

## K

### KATITJIN

Katitjin is a term-long experiential education program, unique to Wesley. 'Katitjin' is a Nyoongar term meaning 'to listen and to learn'. For one term in Year 8, students are taken away from the traditional classroom into a range of challenging and inspirational environments, to explore self-awareness, team dynamics and community.

The program is conducted primarily in the Perth CBD, based at the West Australian Rowing Club. Students are encouraged to:

- Develop and nurture an understanding of self and leadership skills;
- Develop team dynamics through a variety of challenges;
- Engender greater engagement and commitment to the pursuit of learning;
- Develop an outward looking focus through experiences linked to community service;
- Apply knowledge and skills to a real life context.

Katitjin is built around a series of project-based learning initiatives, incorporating themes such as social justice and outdoor education experiences, which continue to integrate all key Learning Areas of the curriculum.

This innovative program aims to challenge and extend students and take them outside their comfort zones within a supportive environment. Katitjin is staffed by specialist teachers, with added expertise contributed from the Middle School tutor teachers. Ongoing research indicates there are a range of significant benefits to students after completing a term of Katitjin.

## L

### LAPTOPS

In the Middle School, laptops are provided for your child. Boarding students take their laptops back to Boarding for prep. The students have Laptop Guidelines whilst using the School's laptops. Please see page 68 for the full set of guidelines.

### LEADERSHIP

Leadership is about having a positive impact on others and realising that everyone has the potential to act in a way that others will admire and want to emulate; whether in their music ensemble, the classroom, on the sports field, leading a service project or in the playground. Leadership is being willing to do the right thing even when it's going to cost you more than you want to pay.

At Wesley there are many ways for you to develop your leadership skills. You can:

- Lead a service project in your Tutor Group.
- Make the most of the leadership development sessions.
- Nominate for a formal leadership position, like Student Representative Council, House Captain or Chapel Monitor.
- Become a member of one of the various student committees or groups.
- Take a lead role in House Activities.

Further information is available in the 'Student Leadership' section under the 'Service Learning and Leadership' tab in the 'Beyond the Classroom and Co-curricular' menu on Schoolbox.

### LIBRARY

The HR Trenaman Library, located off Jenkins Quadrangle, is a flexible dynamic learning space that meets the educational and recreational reading and research needs of the whole school community. The Trenaman caters for students from Year 5–12, staff and the wider Wesley community. As well as the physical resources available in the library, students are able to access online resources from home via the 'Library and Information Services' tab, available in the 'Classroom and Curriculum' menu on Schoolbox.

The Library Manager and technical staff in The Trenaman Library offer resources that support the curriculum in a range of formats, including print, audio and



digital fiction and non-fiction, online databases, and materials students use to make and create.

Students can read a newspaper or magazine in one of the comfortable booths; catch up with the news on the wide-screen television; work alone or in groups; look for information in print or online; and get assistance from library staff.

The joy of reading is strongly promoted and encouraged through reading programs, displays, events and modelling silent reading. All students are catered for, whether they are emerging, developing or voracious readers. Students are expected to return borrowed resources in a timely manner to enable others to use them. The loan period can be extended if the resource in question has not been reserved by another student.

The Trenaman Library is a safe, low pressure environment, where all are welcome and students can be themselves. Whether it is to sit quietly and read, catch up on study or hang out with friends, it is loud and filled with the buzz of learning, discussion and discovery.

The Trenaman Library opening hours are as follows:

- Monday to Thursday: 8.00am–5.00pm
- Friday: 8.00am–4.00pm
- End of term and Mid-term break—the library closes at the same time as classes finish.

Parents needing to contact library staff may phone (08) 9368 8025.

### LOST PROPERTY



All students equipment, property and clothing must be clearly labelled with the student's first and last name. If a student loses something, they need not assume it has been stolen. They need to report the loss to the Middle School Reception.

Any lost property should be handed in to the relevant sub-school reception office. For the latest information on lost property or to find out where to look for your lost property, please check via the 'Lost Property' tab, under the 'College Services' menu of Schoolbox.

Unnamed items will be located at:

- Middle School Year 7 and Year 8 near the glass sliding door entrance to the Middle School Reception
- Transition Building Year 5 and Year 6 outside the middle Classroom in each area

Lost property will be returned to students if it is clearly labelled.

## M

### MOBILE PHONES

In spite of their utility, mobile phones pose a security risk (theft) and can be both a disruption and a distraction in class. Mobile phones are not permitted in class and must be left in lockers during the school day. Staff will confiscate mobile phones found in class and students will collect them from the Middle School Reception. Repeat issues will result in further consequences.

Year 8 students doing Katitjin are allowed to use a mobile phone as a learning tool in class at the permission of the Katitjin staff.

### MOORDITJ MOB

Please see Co-curricular section.

### MUSIC

Please see Co-curricular section.

## N

### NAME BADGES

All visitors to the campus are required to wear a name identification badge at all times whilst on the grounds. The name badges are important in safeguarding both the students and staff against unwelcome visitors. This particularly applies to parents waiting on campus to collect their children.

Parents may order their badges, free of charge, by contacting Central Reception on (08) 9368 8000. These badges complement the existing badges that all Wesley staff members are required to wear whenever present on the campus.

If parents visit Wesley without a badge, or do not have one, they should sign in electronically and collect a visitor's badge as soon as they arrive, via Middle School Reception.

## O

### OLD WESLEY COLLEGIANS' ASSOCIATION

Membership in the Old Wesley Collegians' Association (OWCA) is available to all ex-students of Wesley College (South Perth) be they male or female. Length of attendance at Wesley matters none, we welcome and embrace all ex-students. The OWCA seeks to facilitate and foster communication between current students, past students, the College and the wider College community, through a number of activities. The OWCA is governed by an independent executive committee of past students. The OWCA hosts a large number of reunions each year, special events as well as regional and international visits, including:

#### Sporting Events

- OWCA Golf Day
- OWCA v College Summer Sport
- PSA Challenge: College Cup Sailing
- OWCA v College Winter Sport
- PSA Challenge: PSA Golf Day
- Gold Sponsor of 'WASP Hockey' and 'Curtin/Wesley Football'

#### Cultural Endeavours

- Annual ANZAC Day Service
- Gold Sponsors of the Wyvern Big Band
- Pioneers' Day

The primary objectives of the OWCA are to:

- continually grow the standing of the College in the wider community
- make the Wesley experience a positive and life-long one
- provide services to the past student membership that facilitates communication amongst themselves and the College
- provide career advice and mentoring to the current students.

A subsidiary of the OWCA is the Mildred Manning Scholarship Trust. The Trust seeks to raise funds in order to provide income for scholarship funding to deserving students. The Trust is managed by the OWCA and appointed Trustees.

## P

### PARENTS' & FRIENDS' ASSOCIATION

Since 1953, the Wesley Parents' & Friends' Association (P&F) has been supporting the Wesley College community. The P&F's vision is to build community spirit, promote fellowship and enhance our students' experience at the College. We achieve our vision through various ways including social events and both direct and indirect fundraising. From the proceeds of our events, we are absolutely committed to sponsoring projects and events that enrich our students' experience.

Wesley's unique community spirit is inherent in our vast network of committed parent volunteers. There is an array of opportunities for parents

to be involved in College life, through the Wesley P&F as well as numerous parent support groups established to assist with specific areas of endeavour such as individual sports, music or drama productions.

### Membership

The Wesley P&F is an incorporated body with membership open to all parents and guardians of Wesley College students. An annual voluntary membership fee of \$65 is added to the bottom of each family's Statement of Accounts. The Association also extends membership to friends of the College and may confer the title of Honorary Life Members to those having given long and devoted service to the College.

### Volunteering

The P&F is always on the look-out for volunteers and you can be sure that you will be welcomed with open arms—the more the merrier!

Volunteering opportunities include:

- Becoming a year representative (Junior and Middle School)
- Lending a hand at the many events that the P&F hosts throughout the year
- Joining the P&F Executive Committee

If you're interested in volunteering or becoming more involved with the P&F, please contact [parents@wesley.wa.edu.au](mailto:parents@wesley.wa.edu.au).

### Year Group Representatives

#### Middle School Class Representatives

The role of Year Group Representatives is a joint P&F and Middle School initiative, and aims to provide a network of parent help and support in the areas of Class, Year Groups, Middle School and P&F functions/fundraising/socials. It is not intended to be an onerous time commitment, but will involve you in the life of Wesley as little or as much as you would like. Year Group Representatives will be asked to liaise and coordinate with other parents in Middle School, and provide assistance for Middle School and P&F social or fundraising events or educational forums as they arise during the year. Your help as a representative is invaluable in contacting other parents to encourage attendance.

Year Group Representatives will be asked to help organise social gatherings (e.g. morning teas, dinners, movie nights) to enable parents to meet and mix with other parents of their student's class and/or year group.

Middle School staff are always happy to attend class functions and events as an informal opportunity to interact within the school community. However, it should be recognised that on such occasions, staff are attending as guests of the parent body and are not responsible for the wellbeing of students.

### PARENT SUPPORT GROUPS

Wesley College has numerous parent support groups (PSGs) operating to assist the delivery of programs, thereby benefitting the entire student population. Parents working within these groups volunteer their time,

expertise and enthusiasm to ensure that the groups run in an efficient and productive manner.

The aims of the PSGs vary from group to group. However, their primary functions are to:

- Support staff responsible for conducting specific programs;
- Provide fundraising opportunities to offer financial support for items such as tours and equipment that cannot be provided through the allocation of school funds;
- Provide a medium of social interaction between the parents.

Although the College is committed to the provision of the fundamental requirements of each program, budgetary constraints do not enable all the wants of every program to be met. Therefore, the in-kind support and financial assistance provided by support groups enhance the programs.

### Current support groups

- Music Support Group
- Boarding Support Group
- Wesley Badminton Support Group
- Wesley Basketball Support Group
- Wesley Cricket Support Group
- Wesley Cross Country Support Group
- Wesley Football Support Group
- Wesley Hockey Support Group
- Wesley Rowing Supporters' Club

- Wesley Rugby Union Friends and Supporters (WRUFS)
- Wesley Soccer Support Group
- Wesley Tennis Support Group
- Wesley Volleyball Support Group
- Wesley Water Polo Support Group

A parent support group committee comprising one representative from each of the individual support groups, a P&F representative, the Head of Sport, the Director of Arts and the Director of Community Relations meet once each term. It is the aim of the Committee to adopt a collaborative approach to manage processes and gain consistency across the various support groups.

Guidelines have been developed through consultation between Wesley staff and representatives of the various support groups. These guidelines provide terms of reference for the existing groups and also provide foundation information for the establishment of new groups. If you have any queries in relation to the PSGs or would like a copy of the guidelines, please contact:

[communityrelations@wesley.wa.edu.au](mailto:communityrelations@wesley.wa.edu.au).

### PASTORAL CARE

Pastoral care and behaviour management are inextricably linked. The classroom teacher, coach, manager, teacher on duty, and all teachers are responsible for the effective care of a student. This may require interventions under the behaviour management policy and such interventions, including the impositions of sanctions, invariably have a pastoral and educative dimension.



Monitoring students' pastoral care is the direct responsibility of the class teacher from Pre-kindergarten to Year 4, of the Tutor in Years 5 to 8, of the Mentor from Years 9 to 12 and of the Boarding Year Coordinators and the Head of Boarding for boarders. The relationship between the Tutor, student and parent is extremely important in the Middle School. These staff should be the first point of contact for any concerns about your child's general welfare and progress as their role is to support and encourage individual contributions and development. Specialist guidance and support is available from the College Psychologists, Heads of Year/Team Leaders, Assistant Head of Middle School and Head of Middle School.

The Head of Middle School exercises overall responsibility for the welfare and progress of all Middle School students. The Head of College becomes involved in pastoral or behaviour management issues at the request of the Head of Middle School or when the student's continued enrolment at the College is in question.

## POLICIES

Wesley College has a comprehensive list of policies, guidelines and procedures. These can be accessed via the 'College Policies and Procedures' tab in the 'College Services' menu of Schoolbox.

## PSYCHOLOGISTS

The College Psychologists apply their psychological and educational expertise to support students, parents and staff to help students achieve optimum outcomes academically, socially and

emotionally. The focus of the College Psychologists' work is to provide support where the presenting concern is impacting on the student's school life.

To achieve these outcomes the College Psychologists can engage in a number of direct and indirect services including:

- supportive counselling for students;
- consultation and collaboration with College staff and other professionals;
- assist parents and students with linking with psychological or therapeutic services in the community;
- decision-making and problem-solving;
- case management;
- social and emotional wellbeing;
- responses to conflict, death, divorce, disaster, trauma and other losses; and
- facilitating programs within the College related to students' positive psychological health and wellbeing.

Psychologists follow strict guidelines for professional conduct and client confidentiality. These codes are monitored by the Psychologists Board of Australia (PBA). Informed consent will be sought from a parent/guardian prior to direct involvement with students from PK-Year 8. For further information please refer to the 'College Psychology Services' tab, in the 'College Services' menu of Schoolbox.



# School Day (Daily Routines)

	MONDAY, TUESDAY, THURSDAY, FRIDAY		WEDNESDAY (SCHEDULED ASSEMBLY)	WEDNESDAY (NO ASSEMBLY)
PERIOD 1	8.30am-9.25am	PERIOD 1	8.30am-9.25am	8.30am-9.25am
PERIOD 2	9.25am-10.20am	PERIOD 2 (SEL)	9.25am-10.10am (shortened SEL)	9.25am-10.40am (extended SEL)
TUTOR/CHAPEL	10.20am-10.40am	ASSEMBLY	10.10am-10.40am	N/A
RECESS	10.40am-11.00am	RECESS	10.40am-11.00am	10.40am-11.00am
PERIOD 3	11.00am-11.55am	PERIOD 3	11.00am-11.55pm	11.00am-11.55pm
PERIOD 4	11.55am-12.50pm	PERIOD 4	11.55pm-12.50pm	11.55pm-12.50pm
LUNCH	12.50pm-1.30pm	LUNCH	12.50pm-1.30pm	12.50pm-1.30pm
PERIOD 5	1.30pm-2.25pm	PERIOD 5	1.30pm-2.25pm	1.30pm-2.25pm
PERIOD 6	2.25pm-3.20pm	PERIOD 6	2.25pm-3.20pm	2.25pm-3.20pm
	<div>Thursday: Years 5-6 Sport</div> <div>Friday: Years 7-9 Sport</div>			



## S

### SCHOOL DAY (DAILY ROUTINES)

Please see page 53 for a summary of a typical Wesley College schedule.

#### Sports Training

Year 5 and Year 6 have one training a week which is typically held on Monday. Year 7 and Year 8 have two trainings a week and usually train on Monday or Wednesday afternoons. In some sports there may be morning training. Year 5 and Year 6 compete in the JPSSA on Thursday afternoons, and Year 7 and Year 8 participate in the PSA competition on Friday afternoons.

Please refer to the Sport page on Schoolbox for up-to-date information.

#### Chapel Arrangements

Chapel occurs on Friday in Tutor and the year group roster is to be confirmed at the beginning of each academic term.

### SPEECH AND DRAMA

Please see Co-curricular section.

### SPORT

Please see Co-curricular section.

### SCHOOLBOX

Please see Communication section.



## SUN SAFETY

Wesley College encourages all staff, students and visitors to wear broad-brimmed hats, sunscreen and appropriate clothing when they are in unprotected areas of the College. With respect to students, this approach needs to be in conjunction with the educative process adopted by parents, supported by sensible College guidelines as well as by the Health Education curriculum.

There will be expectation from the staff that students will bring their own sunscreen and apply it an appropriate time before an outdoor activity. Sunscreen is available across the campus but it is the responsibility of the students to reapply over the day. The College will not enforce students applying sunscreen due to the potential risk of allergies, so parents are the key stakeholder in this space.

Wesley College will provide shaded areas where possible during sporting activities or other outdoor activities. Sunscreen is available to staff and students from the classroom and at outdoor sporting events.

Middle School students are mandated to wear a wide brim hat and also has a 'no hat, play in the shade' policy. Please refer to Sun Safety Guidelines for specific information.

## T

## TERM DATES 2024

### Term One (9 weeks)

Tuesday 29 January to Thursday 28 March

- Mid-term Break: Friday 1 March to Monday 4 March

### Term Two (10 weeks)

Tuesday 16 April to Friday 21 June

- Mid-term Break: Friday 31 May to Monday 3 June

### Term Three (10 weeks)

Tuesday 16 July to Friday 20 September

- Mid-term Break: Friday 16 August to Monday 19 August

### Term Four (9 weeks)

Tuesday 8 October to Friday 6 December

## U

## UNIFORM

Students should be dressed neatly and be well-presented whenever they wear the College uniform, demonstrating respect for themselves and the College.

We hope that all students feel proud to be part of the Wesley College community and when representing the College in the wider community they wear their uniform with pride. Failure to do so will result in disciplinary action.

It is compulsory for Middle School students to wear the College blazer to and from school during Term Two and Term Three as well as during formal occasions.

### What to wear to school

**Term One and Four:** Students are to wear formal summer uniform unless otherwise advised via College correspondence.

**Term Two and Three:** Students are to wear formal winter uniform unless otherwise advised via College correspondence.

### What is 'Best Dress'?

'Best Dress' is the complete winter uniform including blazer. It's essential that your child wears this for special occasions such as Speech Day and award assemblies. Don't worry though – you will be told when Best Dress is required.

Please note black athletic/lifestyle shoes or runners with leather are not permitted.

### What uniform items do I need?

Summer (Term 1 and 4)

#### Boys Years 5–12

Striped short sleeved shirt

Charcoal tailored shorts

Wesley charcoal socks

Green long-sleeve pullover

Black leather formal lace-up shoes

Black bucket hat

College backpack

#### Girls Years 5–6

Striped short sleeve shirt

Charcoal skirt

Green long-sleeve pullover

Wesley charcoal socks

Black Mary Jane shoes or black leather formal lace-up shoes

Black bucket hat

College backpack

Winter (Term 2 and 3)

#### Boys Years 5–12

Charcoal tailored trousers

Black belt

Blazer

White long sleeved shirt

Wesley charcoal socks

Green long-sleeve pullover

House tie

Black leather formal lace-up shoes

Black bucket hat

College backpack

#### Girls Years 5–6

Tartan skirt or black trousers

Long sleeve white blouse

House tie

Blazer

Green long-sleeved pullover

Charcoal socks or black tights

Black Mary Jane shoes or black leather formal lace-up shoes

College backpack

**Physical Education Uniform**

Sports shorts

Sport polo

House polo

Wesley sport socks

Bathers

Rash top (Years 5 to 7)

Track top and pants

Black bucket hat

Shower proof jacket (optional)

Sports bag

Please note students incorrectly dressed will not be permitted to participate in Physical and Health Education or sporting activities.

The items listed below are available from the Wesley Uniform Shop for Physical Education Camps:

Drink bottles

Beanies

Scarves

Thermal tops

Thermal pants

Waterproof jackets

Sleeping bags

Headlight torches

Foam sleeping mats

**Girls Years 5-6 Uniform****Boys Years 5-12 Uniform**



## Dress for Physical and Health Education and Inter-School Sport

Students must own a Wesley tracksuit and a College polo shirt. These are to be worn on sporting occasions and to PSA sporting fixtures. It is recommended that all students purchase a Wesley College towel.

The towel is compulsory for the PSA Inter-School swimming team.

On Thursdays, Year 5 and Year 6 students are to wear their school sports uniform to school. On Fridays, Years 7–9 students can wear the school sports uniform to school. All students must own one black wide-brimmed College hat. This hat must be available at school during the day so that it can be worn outside in the sun when the U.V. is above 3, and when deemed necessary by staff or students at other times.

A full list of PSA sports uniforms for Years 5–12 is available via the ‘Uniform Shop’ tab, available on the ‘College Services’ menu of Schoolbox.

## Co-curricular Uniforms

### Athletics

Athletics singlet and shorts (supplied by College)

Anklet sports socks

White L/S inters top

### Rowing

Zoot suit (green)

1st crew zoot suit (black)

White rowing top

White cap (only worn at rowing)

### Australian Rules Football

Football jumper

Football shorts

Winter socks (green)

Indigenous socks

1st team football jumper (black)

1st team winter socks (black)

### Badminton

Badminton polo

Sport shorts (black)

Wesley sport socks

1st team Badminton polo

### Basketball

Year 5 and 6 - see Physical Education uniform

Sport shorts (black)

Years 7 to 12 basketball singlet (green)

Anklet sport socks

1st team basketball singlet

1st team basketball shorts

### Cricket

Crested cricket shirt L/S or S/S

Cricket pants

Anklet sport socks

Cricket hat (white)

1st team baggy green cap

1st team cricket shirt

1st team cricket vest (optional)

### Cross Country

Year 5 and 6 - see Physical Education uniform

Year 7 and 8 - Cross Country singlet

Anklet sport socks

### Hockey

HSV sport top (green)

Sport shorts (black)

Hockey socks (green)

Indigenous socks

1st team Hockey socks (black)

1st team hockey top (black)

### Music

Winter formal uniform

### Rugby

Rugby jumper (green)

Rugby shorts

Winter socks (green)

Indigenous socks

1st team rugby jumper (black)

1st team winter socks (black)

### Soccer

HSV sport top (green)

Sport shorts (black)

Winter socks (green)

Indigenous socks

1st team soccer top

1st team winter socks (black)

### Swimming

Wesley bathers or Jammers

Girls’ bathers

Towel

Swimming cap

Rash top (short/long sleeved)

White L/S inters top

Rubber thongs

### Tennis

Tennis polo

Tennis shorts

Anklet sport socks

1st team tennis shirt

White cap (only worn at tennis)

### Volleyball

HSV sport top (green)

Sport shorts (black)

Anklet sport socks

1st team volleyball top (black)

### Water Polo

Wesley bathers

Swimming cap

Towel

## UNIFORM SHOP

The Wesley Uniform Shop offers new and second-hand clothing at competitive prices. The clothing store is open during the school term:

- Tuesday 8.00am to 4.30pm
- Wednesday 12.00pm to 4.30pm
- Friday 10.00am to 2.00pm.

During the week prior to Mid-term break, the shop will be open on the Thursday from 10.00am to 2.00pm.

The Uniform Shop is located off the main Angelo Street entrance. EFTPOS, MasterCard and Visa are accepted (excluding AMEX). For special opening times during the year and price lists please refer to the 'Uniform Shop' tab, available on the 'College Services' menu of Schoolbox. Additional opening hours are generally added at peak times.

We recommend that new families make an appointment for a uniform fitting to ensure the correct uniform and size is purchased. Appointments for new students usually take one hour.

## V

## VOLUNTEERING

Wesley College could not do all it does without its extraordinary volunteers. As a parent, volunteering is a wonderful way to form community links, networks and friendships, while also supporting your child's College.

There are numerous opportunities for parents to volunteer, from joining our active Parents' & Friends' Association and its committees (see page 48), to supporting our sports teams and arts productions, to helping out in the library or the archive. If you are interested in volunteering your time, the best place to start is by speaking to your P&F year representative and/or the Community Relations team, who will advise what sort of help is needed at any given time, email: [communityrelations@wesley.wa.edu.au](mailto:communityrelations@wesley.wa.edu.au). Also, keep an eye on the News Digest on Schoolbox.

## W

## WESLEYANA CLUB

The Wesleyana Club is a group of mothers of former students of the College, who meet formally once a term at the College. This usually involves a guest speaker, morning tea and an update on College activities.

If you would like further information, please email the Wesleyana Club Secretary, Laurel Smith at: [lrcsmanor@westnet.com.au](mailto:lrcsmanor@westnet.com.au)

## WESLEY FRIENDS

Wesley Friends offers practical and essential support to Wesley College families in time of need, illness and grief. Privacy, discretion and dignity are at the heart of the service that Wesley Friends provide. Some ways that we can help include providing meals, picking up shopping, helping with gardening or just having a chat.



To access support for you or a Wesley College community member, please contact us on the address below. Wesley Friends is always looking for volunteers who have a desire to help others – we would love to hear from you! Please contact us via: [wesleyfriends@wesley.wa.edu.au](mailto:wesleyfriends@wesley.wa.edu.au)

## WESLEY SPORTS CLUB

The Wesley Sports Club is located off the Angelo Street entrance to the College inside the Physical Education Centre. Students and patrons from the local community are invited to use the College facilities outside school hours and enjoy the many benefits of an active lifestyle. The Club provides a wide range

of fitness activities, offers facilities for hire and hosts numerous national and international sporting teams competing in Perth. All funds raised through activities of the Sports Club are returned to the College, to be used for the mutual benefit of both the Club and the College to improve the Wesley sports facilities.

### Facilities Available

Listed below are the various activities on offer at the Sports Club. More detailed programs are available from the Sports Club Reception. Full details can be found on our website at [wesley.wa.edu.au/our-community/sports-club/](http://wesley.wa.edu.au/our-community/sports-club/) or by calling (08) 9368 8043.



**Group fitness**

Aerobics

Aqua Aerobics

Boxing

Yoga

Pilates Reformer

**Weights Room**

Cardio machines

Free weights

Pin-select weights

**Indoor courts**

Badminton

Basketball

Volleyball

**Swimming Pool**

Heated, flood-lit 25 and/or 50m

Wesley Sports Club also organises a 'Gym for Juniors' program which is an after school, or in term program with a

focus on gymnastics for boys and girls aged 2 to 12 years. Classes are held every Friday afternoon during the school terms at the Wesley Sports Club. Classes provide an opportunity for children to hone their motor development skills, coordination and balance in a fun and social framework.

Many groups use Wesley Sports Club facilities for their lessons and activities. Some of the current user groups include tae kwon do, karate, dance, triathlon, children and adult swimming lessons, and personal training. Further details on these groups can be obtained from the Sports Club Office.

**Opening Hours**

For Sports Club opening hours, visit [www.wesley.wa.edu.au/our-community/sports-club](http://www.wesley.wa.edu.au/our-community/sports-club).





# Frequently Asked Questions

## Who to contact if your child is ill and unable to attend school?

As soon as you know that your child will be absent from school, please use the Wesley Schoolbox App.

**Junior School Reception**  
(08) 9368 8012

**Junior School Absentee Direct Line**  
(08) 9368 8183

**Middle School Reception**  
(08) 9368 8011

**Middle School Absentee Direct Line**  
(08) 9368 8182

**Senior School Reception**  
(08) 9368 8053

**Senior School Absentee Direct Line**  
(08) 9368 8181

## Who to contact if your child has lost something?

We ask parents to carefully discuss with their child the circumstances in which a belonging has gone missing before telephoning the College unless the item is of extreme personal or monetary value. The best thing to do is to wait a few days in case it turns up and regularly check Lost Property (refer to page 46 for details).

## Who to contact if you observe unsatisfactory behaviour by Wesley students off campus?

**Head of Junior School**  
(08) 9368 8012

**Head of Middle School**  
(08) 9368 8011

**Head of Senior School**  
(08) 9368 8053

This information was correct at the time of printing and Wesley College reserves the right to make policy changes.



# Contact List

## Central Reception

(08) 9368 8000

## Head of College

(08) 9368 8002

## Head of Middle School

(08) 9368 8011

## Assistant Head of Middle School

(08) 9368 8031

## Chaplain

(08) 9368 8064

## Reception Offices

### Central Reception

wesley@wesley.wa.edu.au

(08) 9368 8000

### Junior School

junior@wesley.wa.edu.au

(08) 9368 8012

### Middle School

middle@wesley.wa.edu.au

(08) 9368 8011

### Senior School

senior@wesley.wa.edu.au

(08) 9368 8053

### Arts Office

arts@wesley.wa.edu.au

(08) 9368 8030

## Boarding House

### Reception

boarding@wesley.wa.edu.au

(08) 9368 8078

## Resident on Duty (ROD)

(08) 9368 8078

## Lower Tranby

(08) 9368 8068

## Katitjin

### Off Campus Contact

0429 014 200

## Organisations

### Parents' & Friends' Association

parents@wesley.wa.edu.au

### Wesley Sports Club

(08) 9368 8043

www.wesley.wa.edu.au/our-community/sports-club/

## Uniforms

### Wesley Uniform Shop

uniformshop@wesley.wa.edu.au

(08) 9368 8022

## Library

### Middle School and Senior School Library

(HR Trenaman Library)

(08) 9368 8025

### Extend After School Care

enquiries@extend.com.au

1300 366 437

extend.com.au/wesleypertth



## Community Relations

### Director of Community Relations

(08) 9368 8126

### Enrolments

enrol@wesley.wa.edu.au

(08) 9368 8032

### Communications & Marketing

communityrelations@wesley.wa.edu.au

(08) 9368 8149

### Alumni

owca@wesley.wa.edu.au

(08) 9368 8131

### Events

(08) 9368 8115

### Archives

(08) 9368 8124

## Health Services

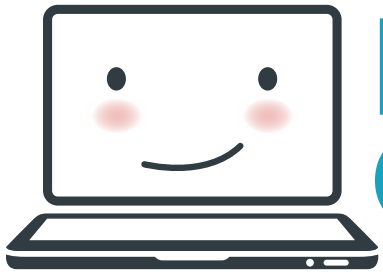
### Health Centre

(08) 9368 8073

### Manager Health Services

health@wesley.wa.edu.au

(08) 9368 8009 / 0407 973 190



# LAPTOP MIDDLE SCHOOL GUIDELINES

Students *must* adhere to the **COMPUTER NETWORK USAGE POLICY** as outlined on Schoolbox as well as look after their device: Students are expected to demonstrate appropriate ILT and internet usage, in particular, appropriate use of Social Media and accessing only appropriate online content in accordance with School and Community Standards. All use of Social Media should demonstrate the highest level of moral, ethical and personal communication standards.

## PHYSICAL CARE

You are accountable and responsible for the safe keeping of your laptop. In the event that damage does occur to your laptop, you are required to report it to your Tutor and then ILT immediately.

Please ensure no eating and drinking occurs near your laptop.

Treat the laptop with due care. **DO NOT** remove existing labels, keys nor deface the laptop in any way.

When carrying the laptop, you must not run and the lid must be closed.

When moving between lessons/rooms, laptops should be carried in its case.

Do not carry or lift the laptop by the screen.

When laptop is not in use, have it stored in your laptop case to protect it.

Ensure your laptop is in a safe place where it can not be damaged, e.g. not on the floor where it can be stepped on.

## PROCESSES & RESPONSIBILITIES

Ensure that the laptop is ready to use in all lessons and take to specialists if required.

With assistance of Tutors, clearly identify the laptop, e.g. clearly label laptop.

Ensure that the laptop is stored and charged in your Tutor's classroom.

During recess & lunchtime breaks, the laptop is not to be used. It is to be stored in your tutor room; however, if the room is locked or doesn't have an adult in it and you are returning from a specialist, this could be safely & securely stored in your locker. At the end of the school day it must be stored and charged in your Tutor's classroom, except for Boarders who will store theirs in the Boarding House storage cupboard. Laptops are not to be left around the campus and should not have excessive exposure to sunlight or hot surfaces.

It is your responsibility to ensure your laptop is fully charged overnight and it is strongly recommended that laptops are shutdown (not put into sleep mode) at the end of the day before putting into the storage cupboard. This is to ensure that the devices are started at school at the beginning of the day and automatically collect any required updates during the startup process. Failure to do so may result in unstable operation, requiring a reboot during the day.

You are accountable for all use of Wesley College systems used or accessed with your username. It is your responsibility to keep your password secure and confidential. In keeping a password secure, it must not be divulged to any other person. Any account issued to you is for your exclusive use only. Providing your login details to another student, or using another student's login details (identity theft) will result in account suspension for both students and potentially further disciplinary action.

Your documents/files should be stored in OneDrive in order to minimise the potential for data loss.

## DIGITAL USE

Be responsible digital citizens and be aware of your digital footprint/digital citizenship.

Do not engage in the unauthorised recording of digital images, video or audio on either your laptop or any other electronic device. Under no circumstances are you permitted to record or distribute digital images, video or audio without the permission of the subject of the recording and the supervising teacher.

With the use of email and other Internet services, users can be traced back to Wesley College. You must carefully consider the implications of posting information on the internet that can identify yourself or others, and consult your teachers if in any doubt.

Respect the privacy of others and do not attempt to find out another user's password or gain access to their account.

Do not attempt to bypass any restrictions imposed on your use of the IT resources including, but not limited to, internet access filters and firewalls.

Ensure that the laptop configuration is not altered in such a way that would interfere with proper operation. This includes tampering with monitoring and filtering software. Sanctions will apply for breaches.

## BREACHES OF POLICY

The College will monitor Internet usage and will act decisively if any breaches of conduct are observed. A laptop that is damaged or lost through neglect, abuse or malicious act, may require replacement at parent cost. The College will determine whether replacement is appropriate and whether or not the student/parent is responsible for repair or replacement costs and whether or not the student retains access to a laptop.

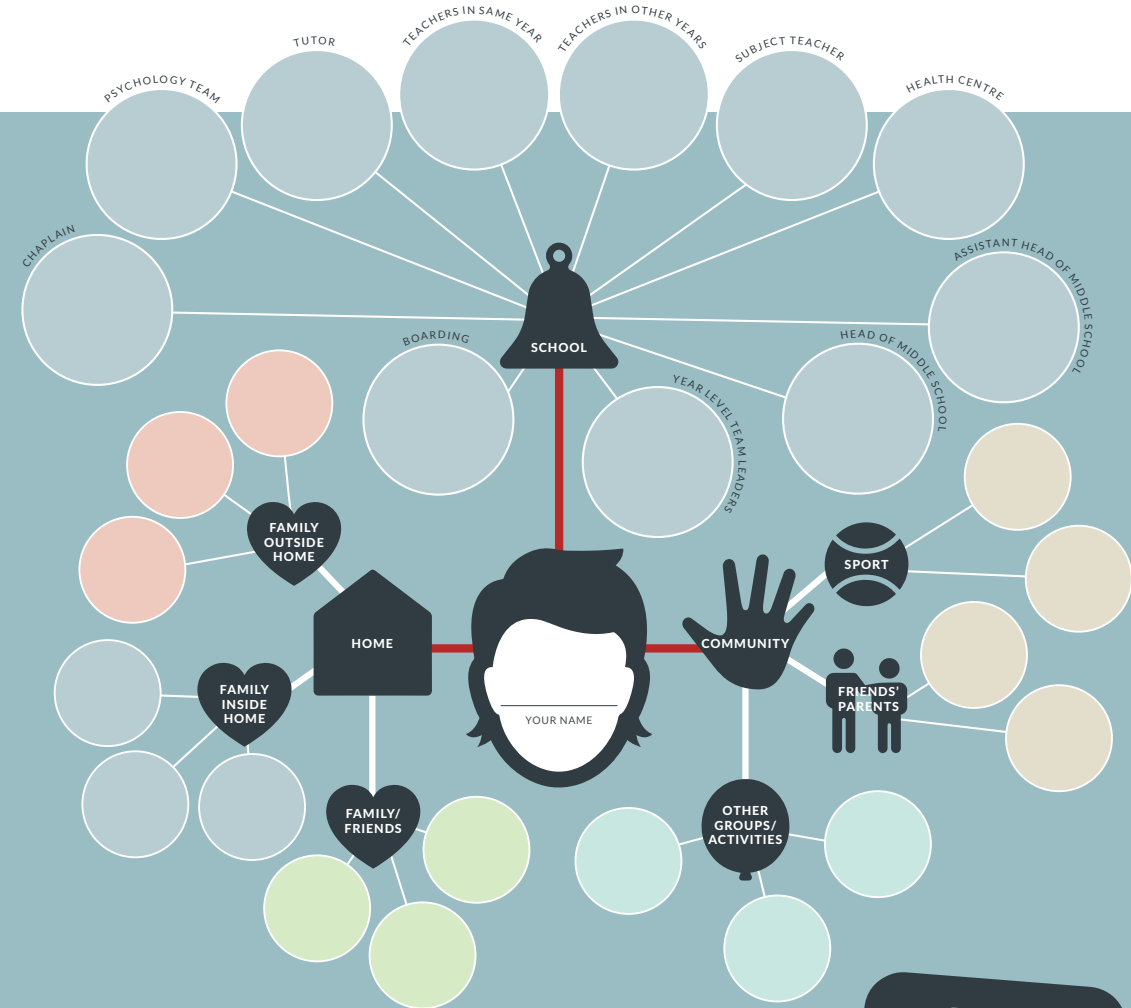
Any breach of the Computer Network Usage Policy may result in suspension of access to the resources as well as any disciplinary action as deemed appropriate by the Tutor, Middle School Operations Coordinator, Assistant Head of Middle School, Head of Middle School, or Head of College. Parents will also be notified if a breach of the policy is deemed to be serious.

Wesley College reserves the right to notify the appropriate authorities in the case where breaches of this policy may constitute criminal offence.



# PERSONAL NETWORK

Talk to us about anything even if it feels awful or small



## ACTIVITY RULES

Highlight the boxes that relate to you and identify people that could be in your Personal Network. Write the names of people you could talk to. You will need at least 5 adults, from a variety of places (e.g. school, home etc)

### People on your personal network need to be

- ☒ adult (18+)
- ☒ available
- ☒ accessible
- ☒ someone who will listen, believe you and take action if necessary
- ☒ live in and outside the home

## PARENTS/GUARDIANS

I agree that the people on my child's network above, are accessible and available for them to talk to.

(Parents please feel free to discuss and add any others that may have been missed for your child).

PARENT/GUARDIAN SIGNATURE







## GETTING AROUND AT WESLEY

ARCHIVES A5 (Ground Floor)	FINANCE OFFICE C6	JUNIOR SCHOOL UNDERCOVER AREA C0	PSYCHOLOGIST MIDDLE & SENIOR SCHOOLS A5 (Level 1)
ARTS OFFICE C4 (Level 1)	GYMNASIUM E6	LANGUAGES CENTRE D4	PSYCHOLOGIST JUNIOR SCHOOL B1 (Ground Floor)
BOARDERS' DINING ROOM C4	HEAD OF COLLEGE'S OFFICE B6	LONG TERM ATHLETIC DEVELOPMENT (LTAD) CENTRE E6	RYAN LECTURE THEATRE C4 (Level 3)
BOARDING HOUSE C3 (Entrance)	HEALTH CENTRE E3	MIDDLE SCHOOL ATRIUM B4	SENIOR STUDIES CENTRE C4 (Level 2)
CANTEEN C3 (Ground Floor)	HUMAN RESOURCES C6	MIDDLE SCHOOL RECEPTION A4	HEAD OF SPORT OFFICE C6
CENTRAL RECEPTION B6	INFORMATION TECHNOLOGY (IT) OFFICE C6	NGALA MAYA (MOORDITJ MOB) A3	TENNIS COURTS E3-G3
CENTRAL STORES D4	JOSEPH GREEN CENTRE GOATCHER AUDITORIUM C4 (Level 2)	OLD COMMON ROOM C6	TRENAMAN LIBRARY C5 (Level 1)
CHAPEL (Old Boys' Memorial Chapel) A6	JOSEPH GREEN CENTRE GALLERY OF HONOUR C4 (Level 2)	OWFA ALUMNI OFFICE B6	UNIFORM SHOP E8
COMMUNITY RELATIONS B6	JOSEPH GREEN CENTRE READHEAD ROOM C4 (Level 3)	P&F AMPHITHEATRE B4	WESLEY SPORTS CLUB E6
ENROLMENTS OFFICE B6	JUNIOR SCHOOL RECEPTION D1	PRINT ROOM C5 (Ground Floor)	

OFF CAMPUS DIRECTORY COLLINS OVAL Thelma Street, COMO | KATITJIN WA Rowing Club Riverside Drive, PERTH | WESLEY BOATSHED 788 Coode Street, SOUTH PERTH

**P** PARKING **VP** VISITOR PARKING **P** **DIS** DISABLED PARKING **R** RECEPTION **GA** DISABLED ACCESS **L** LIFT ACCESS

## Index

### WHO WE ARE.

Our motto	5	Lost Property	46
Our faith	5	Mobile Phones	46
Our vision	5	Moorditj Mob	46
Core values	5	Music	47
Our crest	5	Name Badges	47
Our mission	5	Old Wesley Collegians' Association	47
	5	Parents' & Friends' Association	48

### PEOPLE TO KNOW.

	6	Parent Support Groups	49
	11	Pastoral Care	50

### WHAT YOU NEED TO KNOW.

	13	Policies	50
Absentees	14	Psychologists	50
Before and After School Care	15	School Day (Daily Routines)	52
Behaviour Expectations	15	Speech and Drama	52
Booklists	17	Sport	52
Camps	17	Schoolbox	52
Canteen	17	Sun Safety	54
Code of Conduct	18	Term Dates	54
Communication	19	Uniform	54
Co-curricular	25	Uniform Shop	60
Getting to and from Wesley	38	Volunteering	60
Hair and Dress Standards	39	Wesleyana Club	60
Health Centre	39	Wesley Friends	60
House System	42	Wesley Sports Club	61
Jewellery	43	<b>FREQUENTLY ASKED QUESTIONS</b>	<b>65</b>
Katitjin	44	Contact List	66
Laptops	44	Laptop Guidelines	68
Leadership	44	Campus Map	70
Library	45		







By  
daring  
& by  
doing





**WESLEY COLLEGE**

By daring & by doing



The Uniting Church in Australia

**WESLEY COLLEGE**

Kaya.

Kaya nidja Whadjuk Noongar Boodjar.

We respectfully acknowledge the Whadjuk people of the Noongar Nation as the Traditional Owners of the Land on which we stand and pay our respects to Elders past and present. Here we honour the cultural, spiritual and educational practices of Aboriginal and Torres Strait Islander Australians.

Danjoo Koorliny. We accept the invitation to walk together for a better future.

Booraka Warniny. By daring & by doing.