

# GET TO KNOW PROSPECTUS.



WESLEY COLLEGE  
By daring & by doing



CELEBRATING 100 YEARS (1923-2023)









**WESLEY IS MORE** than a school. We're more than our buildings and more than our results. We're a way of thinking. Our College is not selective, it's egalitarian. **We welcome students from all backgrounds.** We're bound together by a shared desire to achieve **personal excellence.** From academics, to sports, to the arts, Wesley students are given the chance to try everything, **challenge limits** and discover new passions. It's all summed up in our College motto: *By daring & by doing.*

Kaya. Kaya nidja Whadjuk Noongar boodjar. We respectfully acknowledge the Whadjuk people of the Noongar Nation as the Traditional Owners of the Land on which we stand and pay our respects to Elders past and present. Here we honour the cultural, spiritual and educational practices of Aboriginal and Torres Strait Islander Australians. Danjoo Koorliny. We accept the invitation to walk together for a better future. **Booraka Warniny. By daring & by doing.**

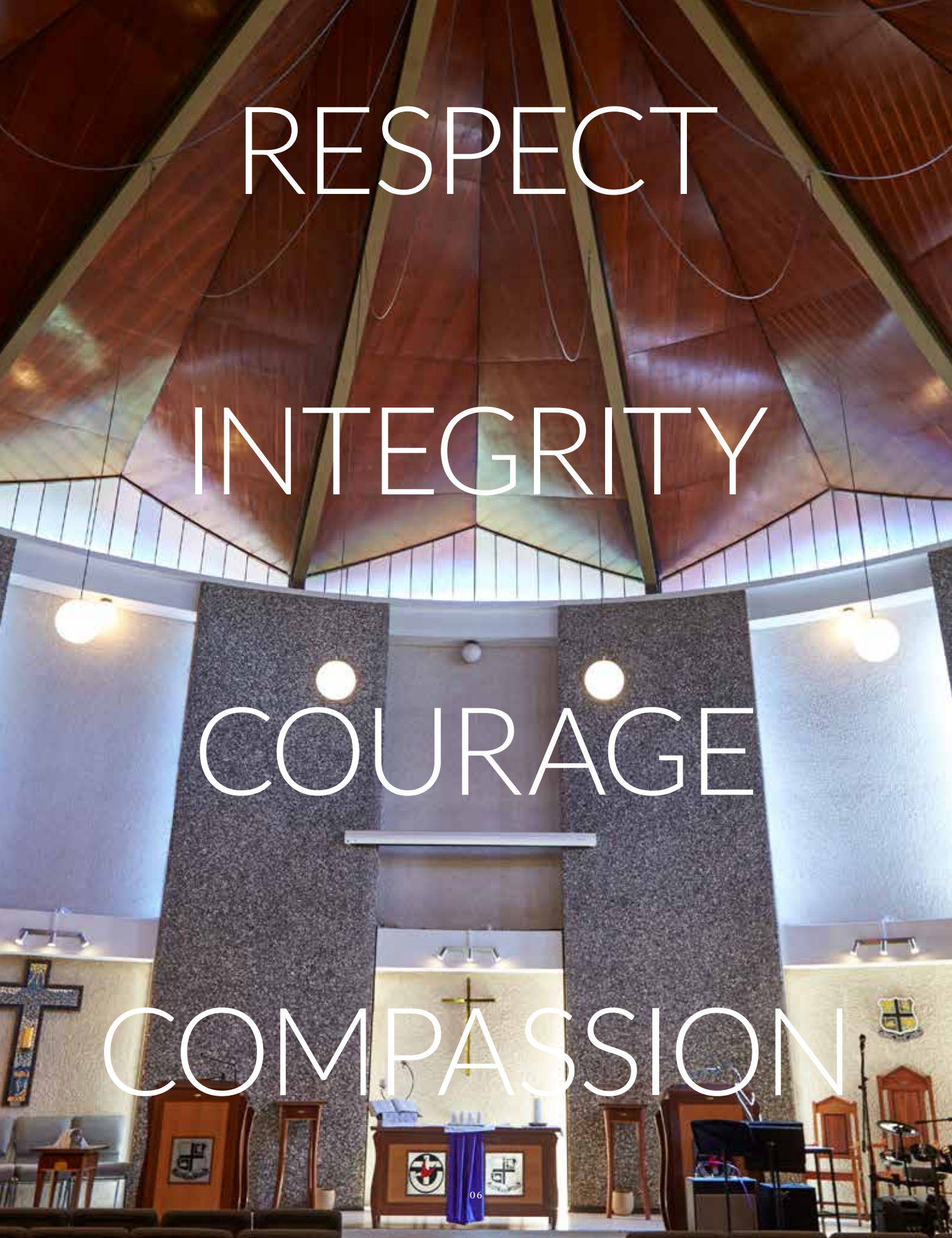




# Contents.

06	MISSION AND ETHOS	38	JUNIOR SCHOOL
08	OUR HEAD OF COLLEGE	42	MIDDLE SCHOOL
10	LOCATION	46	SENIOR SCHOOL
12	WE LOVE WESLEY	<b>50</b>	<b>CO-CURRICULAR</b>
14	WESLEY IN NUMBERS – 100 YEARS OF LEARNING	52	CO-CURRICULAR OFFERINGS 2023
<b>18</b>	<b>WHY WESLEY?</b>	54	ARTS
20	OUR CAMPUS	56	SPORT
22	UNIQUE TO WESLEY	58	SERVICE
26	QUALITY TEACHING AND LEARNING	59	STEAM CHALLENGE, ORATORY AND LITERARY PURSUITS
28	WESLEY CAPABILITIES	60	ADVENTURE
30	ACADEMIC INTERVENTION AND EXTENSION	<b>62</b>	<b>BOARDING</b>
31	WELLBEING AT WESLEY	<b>66</b>	<b>FIND OUT MORE</b>
<b>32</b>	<b>ACADEMIC EXCELLENCE</b>	68	ENROLMENT
34	A SENSE OF COMMUNITY	69	BUS ROUTES
<b>36</b>	<b>OUR SCHOOLS</b>	70	TESTIMONIALS
		71	AWARDS





RESPECT

INTEGRITY

COURAGE

COMPASSION

# Our mission and ethos.



**Our mission is inspired by the Uniting Church tradition – to be a community based on faith, hope and love; developing each individual intellectually, emotionally and spiritually to achieve their personal best.**

Wesley College was founded in 1923 as a day and boarding school for boys.

It was named after John Wesley, co-founder of the Methodist Church (now under the banner of the Uniting Church). Wesley was a passionate crusader for social justice and this is a value we still hold dear.

To this day, the College is affiliated with the Uniting Church and seeks to provide our students with core values that we believe will set them up for life.

Ultimately, we believe that every student has powerful capabilities, skills and talents. Our goal is to support them in activating this

potential to create their own future. We sum it up in our motto *Audendo Atque Agendo, By daring & by doing*. Whether it's academic achievement, sporting achievement or community service, our students are encouraged to think on a grand scale and believe in action.





# A warm Wesley welcome.

**Firstly, I want to thank you for your interest in our College. We understand that choosing the right school is a difficult decision and in WA you're spoilt for choice. There are plenty of outstanding options. So, why Wesley?**

Well, we believe Wesley is unique. Our points of difference can be seen and felt, not least because we make a genuine effort to know every child as a person.

We place students at the very heart of what we do, and want to understand your child's passions. By knowing each child as an individual we are able to unlock their interests and engage their natural enthusiasm.

At Wesley, we have the highest academic standards, but frame them through the lens of each child doing their personal best.

If your child is embracing their passions and striving for excellence, they will find everything they need for success here — from world-class facilities to some of Australia's most dedicated educators. In fact, I believe it would be difficult to

find a more caring and committed group of teachers. They are 'all in' to ensure the welfare and success of your child(ren).

Our belief in creating meaningful relationships extends to our families too. The parents and guardians of our students immediately become part of the Wesley community. Our sense of togetherness is second to none, creating a 'Wesley village' feeling that is unmatched in education.

Like many of the schools you'll be considering, we offer the very best in terms of classrooms, grounds and other facilities. But those things are nothing without a driving philosophy. That's where Wesley's commitment to innovation comes in, because it's never just about the building, it's about how you teach inside it.

In 2018 and 2020 Wesley was named as one of Australia's most innovative schools. This was thanks to the clever and sympathetic ways we have brought technology into our classrooms, but also because of ideas such as our Moorditj Mob program for Aboriginal and Torres Strait Islander peoples, Katitjin, Wesley NEXT, the Long-Term Athletic Development program and our Scientist in Residence.

Looking to the future, we have a strong strategic plan and major building projects lined up to mark Wesley's centenary in 2023.

We believe there are exciting times ahead and we look forward to your family being a part of them.

**MR ROSS BARRON** BAEd/BEEd/MEd  
Head of Wesley College





# A village inside a village.

Wesley College is located in the picturesque suburb of South Perth, only 2km from the Perth CBD and 550m away from the Swan River.

- |                   |                |                |                   |                        |                        |
|-------------------|----------------|----------------|-------------------|------------------------|------------------------|
| 1. WESLEY COLLEGE | 5. POST OFFICE | 8. PHARMACY    | 11. FLORIST       | 14. WESLEY ROWING SHED | 17. MENDS STREET JETTY |
| 2. NEWSAGENT      | 6. BANK        | 9. HAIRDRESSER | 12. CAFÉS         | 15. ANGELO STREET      | 18. KATITJIN           |
| 3. BUTCHER        | 7. SUPERMARKET | 10. HOMEWARES  | 13. OPTUS STADIUM | 16. PERTH CBD          | 19. CROWN HOTEL        |
| 4. DELI           |                |                |                   |                        |                        |





# What we love about Wesley.

“The teachers are fantastic and the new Science Centre is phenomenal.”

Zach, Senior School



“I love that everyone is so kind and looks after you whenever you have a problem.”

Emily, Middle School



“I love the investment and encouragement the teachers put into the students.”

Martin, Senior School



“The sports coaches are great, I’ve been able to try so many new things.”

Lucas, Middle School



“The culture at Wesley is special. Everyone gets around each other, especially in sports.”

Braden, Senior School



“Everyone is kind and fun. I like to play at school.”

Emily, Junior School



“Lunchtimes are fun because there’s always lots to play with!”

Arfe, Junior School



“I love chorale — coming together as different year groups but singing with one voice.”

Andreas, Senior School



“I’ve made really good friends at Wesley. It’s a great place to be.”

Jessica, Junior School



“Learning things in class is exciting. The teachers make it really interesting.”

Oliver, Junior School





A modern, two-story brick building with a red roof and white window frames, set against a clear blue sky. The building is part of a larger complex, with other parts visible in the background.

# 2023

# Viva the evolution!

**Wesley College has stood on the corner of Angelo and Coode Streets since 1923.**

One hundred years ago, Wesley opened its doors to students. If any of us were transported back to 1923 from today, we'd experience some culture shock... the unrelenting dust, the formality of interactions, the heavy clothing.

But, within the gates of Wesley, we'd quickly find shared values. Principles behind the choices we make here every day that haven't changed for a century.

Founding the College, the then Premier, Sir James Mitchell, stood proudly in his top hat and tails and said: "A school performs one

important function if it teaches children to behave well and show consideration for others."

From day one, Wesley was designed to be a place of freedom, where children from all backgrounds could create, learn, and play. A place where we strive to ensure that the future will always be better than the past.

These are the things they believed in then, the things we believe in now, and the things we will believe in for the next one hundred years too.

A black and white photograph of the original Wesley College building, a single-story wooden structure with a gabled roof and a small cupola. A tall water tower stands behind it. A large group of children in period clothing are playing in a sandy yard in front of the building. The scene is set in a rural area with other houses visible in the background.

# 1923



Founded in  
**1923**

**1,309**  
students

Top ATAR  
in 2022  
**99.95**

**\$85k**  
achieved by student  
fundraising per year

# Wesley in numbers.

**172**  
boarders

**17+**  
religions and cultures  
represented

**\$9m**  
Science Centre

**14,000+**  
alumni network

**47**  
Indigenous  
students

**90%**  
of students receive first  
preference tertiary offer

**230**  
sports teams  
(across 13 sports)

**2**  
Beazley  
Medallists



# DARE TO EXPLORE.

**Why Wesley?** Because education should be an adventure for your child. At Wesley, world-class teachers in cutting-edge classrooms endlessly invigorate young minds. It's no wonder we've been named one of Australia's most innovative schools.





# Our campus.

WESLEY’S THREE SUB-SCHOOLS ARE CONNECTED BY A CENTRAL ‘GREEN SPINE’ OF GRASS, CREATING A UNIQUE VILLAGE FEELING FOR STUDENTS AND STAFF.

The Hamer refurbishment (completed in 2018) transformed the existing building into an innovation centre and technology-rich environment for students.

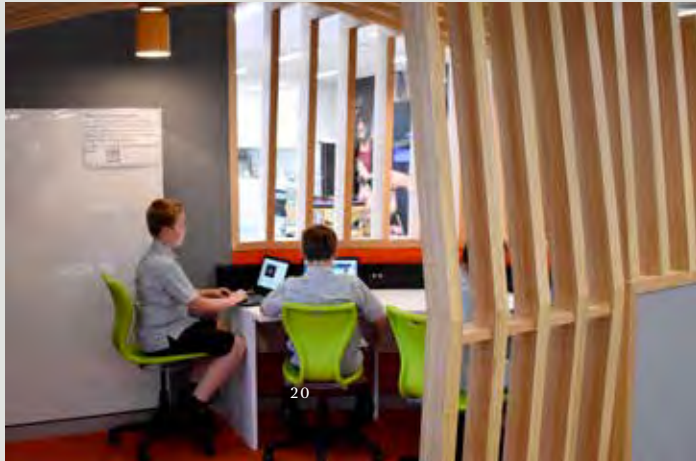


Classrooms at Wesley are designed for 21st Century learning. The Ward and Kefford refurbishment (2012) is a great example of Wesley's commitment to preserving its heritage, yet catering for more sophisticated technology and flexibility of space, including breakout spaces and multimedia booths.



Wesley has three sub-schools: Junior (co-educational Pre-kindergarten to Year 4), Middle (co-educational Years 5 to 6, boys only Years 7 to 8) and Senior School (boys only Years 9 to 12).

The Languages Centre (completed in 2017) has been designed to foster collaboration and cultural intelligence with a focus on real-world situations, as opposed to traditional classroom settings.



The Mildred Manning Science Centre (completed in 2017) has been designed as a living, breathing science experiment to excite students who can learn via a 'hands-on' approach.

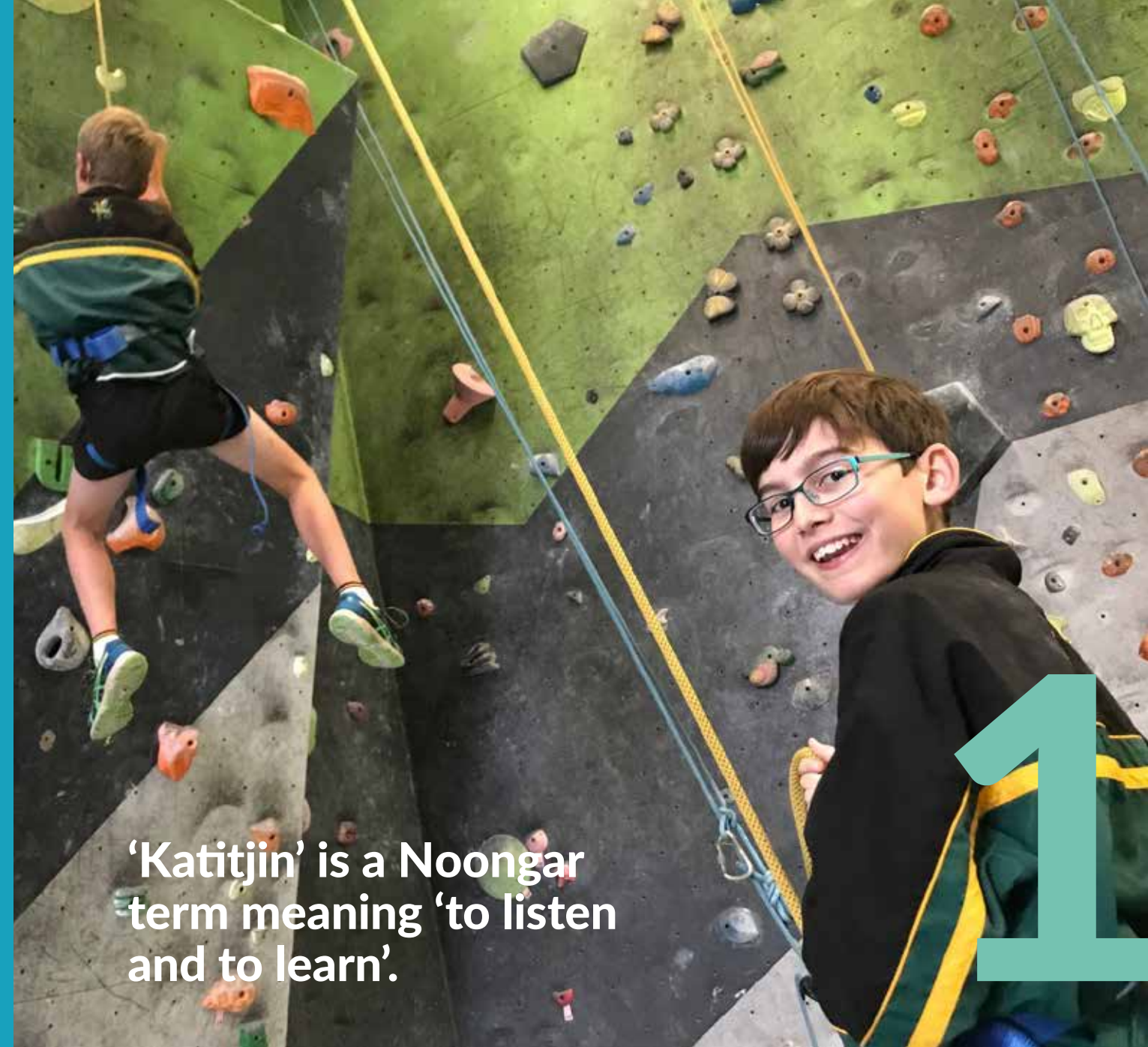


Our 50m pool is heated and our Sports Centre is home to the College's unique Long-Term Athletic Development program.



# We love being different.

**Wesley is widely recognised as one of Australia's most innovative schools. In almost every classroom you'll find something being done in a way that goes well beyond traditional ideas. However, there are four things we offer that are completely unique to us...**



**'Katitjin' is a Noongar term meaning 'to listen and to learn'.**

## KATITJIN

Wesley College offers a program unlike any other in Western Australia. For one term in Year 8 we take our students out of the classroom to learn in an entirely different environment.

For 10 weeks the boys relocate to the CBD to learn Science, Maths, English and other subjects in real-world situations — from monitoring nature in the Swan River to engaging in literacy programs with people in need.

The challenging and inspirational situations help the students explore team dynamics, leadership skills and the real meaning of community.





## MOORDITJ MOB

Wesley offers 30-40 needs-based Aboriginal and Torres Strait Islander scholarships, ensuring that we always have a vibrant First Nations culture at Wesley. It's an important part of living our Reconciliation Action Plan.

Founded in 2006, the students quickly named themselves the Moorditj Mob, taking great pride in celebrating their history through dance and music. Today, they perform up to 60 dances annually both at the College and at outside community events. The Moorditj

Mob was even invited to represent Australia's Indigenous people at the International Indigenous People's Conference in Education in Hawaii. They were the only group to be asked to perform at both the opening and closing ceremonies!

## LTAD

Long-Term Athletic Development (LTAD) is a flagship program at Wesley for students from PK-12.

Students who are beginning to take their sport more seriously are provided opportunities to work closely with a range of strength and conditioning coaches in the College's High-Performance Facility, as well as within senior sports programs.

This includes training load monitoring through GPS, sport nutrition seminars, sport specific warm ups, injury prevention exercise prescription, and recovery practices that are all backed by the latest scientific literature.

All students are tested annually for their physical literacy to ensure appropriate movement interventions are put in place.



## WESLEY NEXT

Wesley NEXT is built around developing real-world skills, from filing your tax return, to essential first aid, to negotiating a car loan.

The aim is to give our Year 10-12 students a depth and breadth of opportunities that go beyond our traditional curriculum in order to develop their passions and skills for the next stage of their journey beyond Wesley.





# Quality teaching and learning.



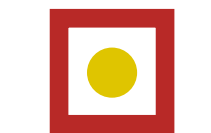
Wesley College is recognised as a centre of learning excellence. The reason is a mix of our outstanding teachers and the following principles.



**We are informed by research, experience, and context.**  
To make informed decisions, we match the best available evidence with teacher expertise, knowledge of our students, and our rich tradition and history as a College.



**We intentionally plan teaching and learning using a balance of Explicit instruction and Inquiry approaches.**  
Teachers are deliberate and responsive in their application of teaching strategies, resources, technologies, and assessment.



**We intentionally design curriculum.**  
Courses and units are based on specific learning goals as directed by the Western Australian Curriculum, and underpinned by the Wesley Capabilities of critical thinking, creativity, commitment, communication, collaboration, citizenship and continuous improvement.



**We know that relationships are key.**  
Teacher-student relationships, our pastoral care system, and teacher-parent partnerships are central to supporting student wellbeing and belonging so that students are ready to learn.



**We know that teachers make the biggest difference to student achievement.**  
Every teacher at Wesley works to challenge, inspire and engage all students to become lifelong learners who make a positive difference to the lives of others.

“  
At Wesley, we push the boundaries of what traditional education looks like. Innovation is in our DNA, from our state-of-the-art spaces, to our cutting-edge use of technology, to our character and life-defining programs such as Katitjin and Wesley NEXT. We’re always looking for ways to live and breathe our motto ‘By daring & by doing’.”



**MR MATHEW IRVING**  
is Deputy Head (Academics and Strategy). In 2022 he was given an Excellence in Educational Leadership Award and appeared in The Educator's list of educators who are reshaping learning.



**MRS SOPHIE CARROLL**  
is Wesley's Director of Student Wellbeing & Service Learning.

“  
Wellbeing is at the heart of Wesley. I want every student to feel supported, safe, and celebrated for being who they are. It is this support that gives students the courage to take risks; try something different; to dream, to dare and to do. They feel safe in being themselves, and taking on challenges, knowing we will be the first to support and catch them if they fall, and we will be the loudest to cheer and celebrate with them when they succeed.”

“  
I want students to get to know themselves as learners and young adults in our society. To understand how they think and why that is the case, to be willing to listen to other points of view, form their own opinions and justify them, but not be afraid to change their mind too. This will help them be active citizens who can make informed decisions about their future.”



**MR MIKE FILER**  
is the Head of Academic Development. He was recently recognised at the PTCWA Awards for his Outstanding Professional Service.

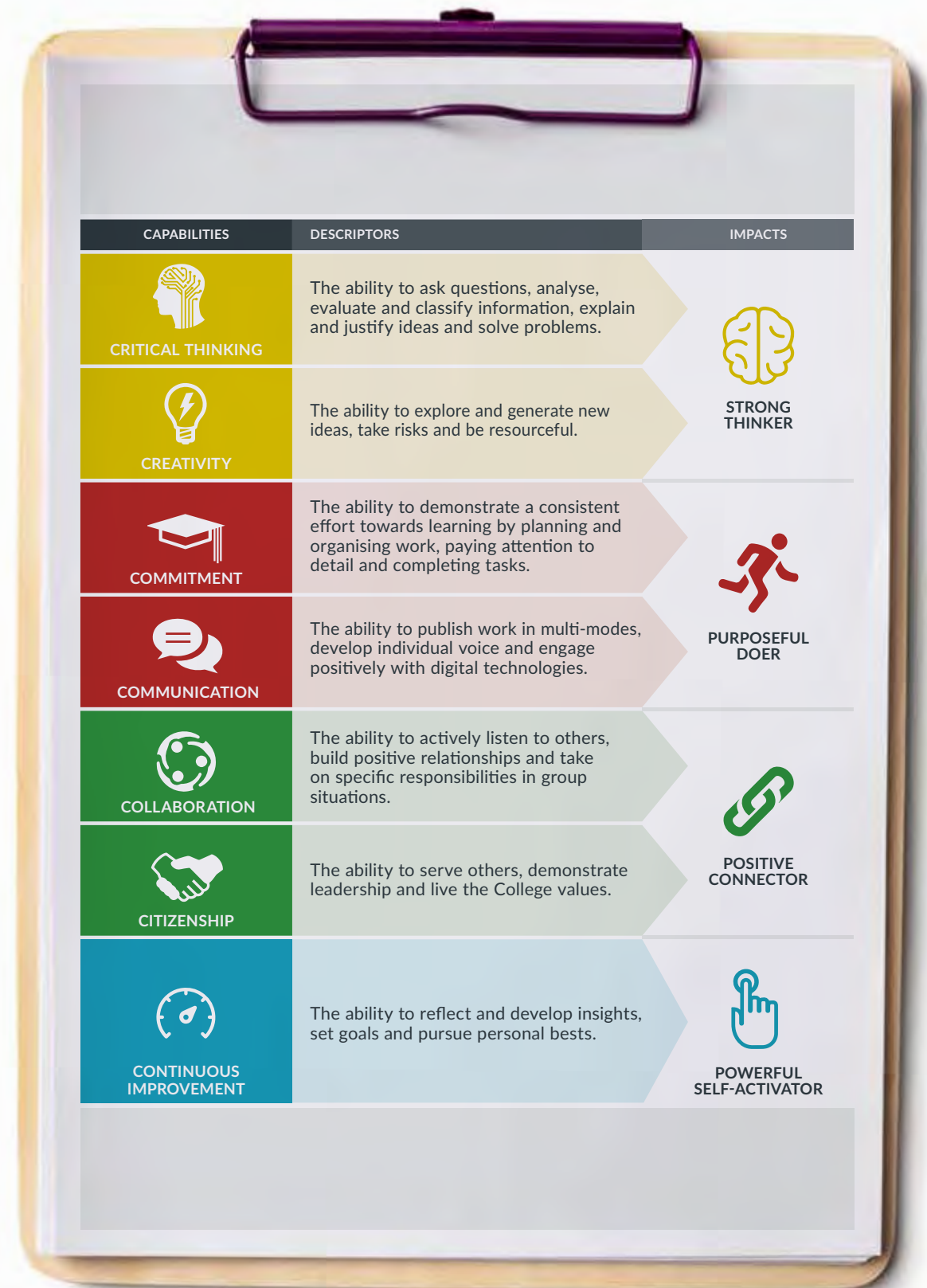


# The Wesley Capabilities — The 7Cs.

These are the transferable skills and behaviours that indicate progress and achievement by students towards holistic success.

In addition to literacy, numeracy and discipline-specific knowledge and skills, students demonstrate their proficiency in the Wesley Capabilities in both academic and non-academic contexts.

Individual student data in relation to the Wesley Capabilities is collected and tracked to demonstrate student growth over time.





# Academic intervention and extension.

**In 2019, the College introduced a new Academic Engagement Model to bring clarity to learning support and extension programs across the College.**

The new model has brought about greater intervention support for students with additional learning needs as well as quality differentiation learning and teaching in classrooms.

Enrichment and extension opportunities for students of all ages are plentiful, such as the 'Dare Accepted' clubs and 'Scientist in Residence' Program in the Junior School, as well as 'Future Problem Solving' and 'World Scholar's Cup' in the Middle School.

We strive to meet the needs of all learners, and address the following areas to enhance individual learning:

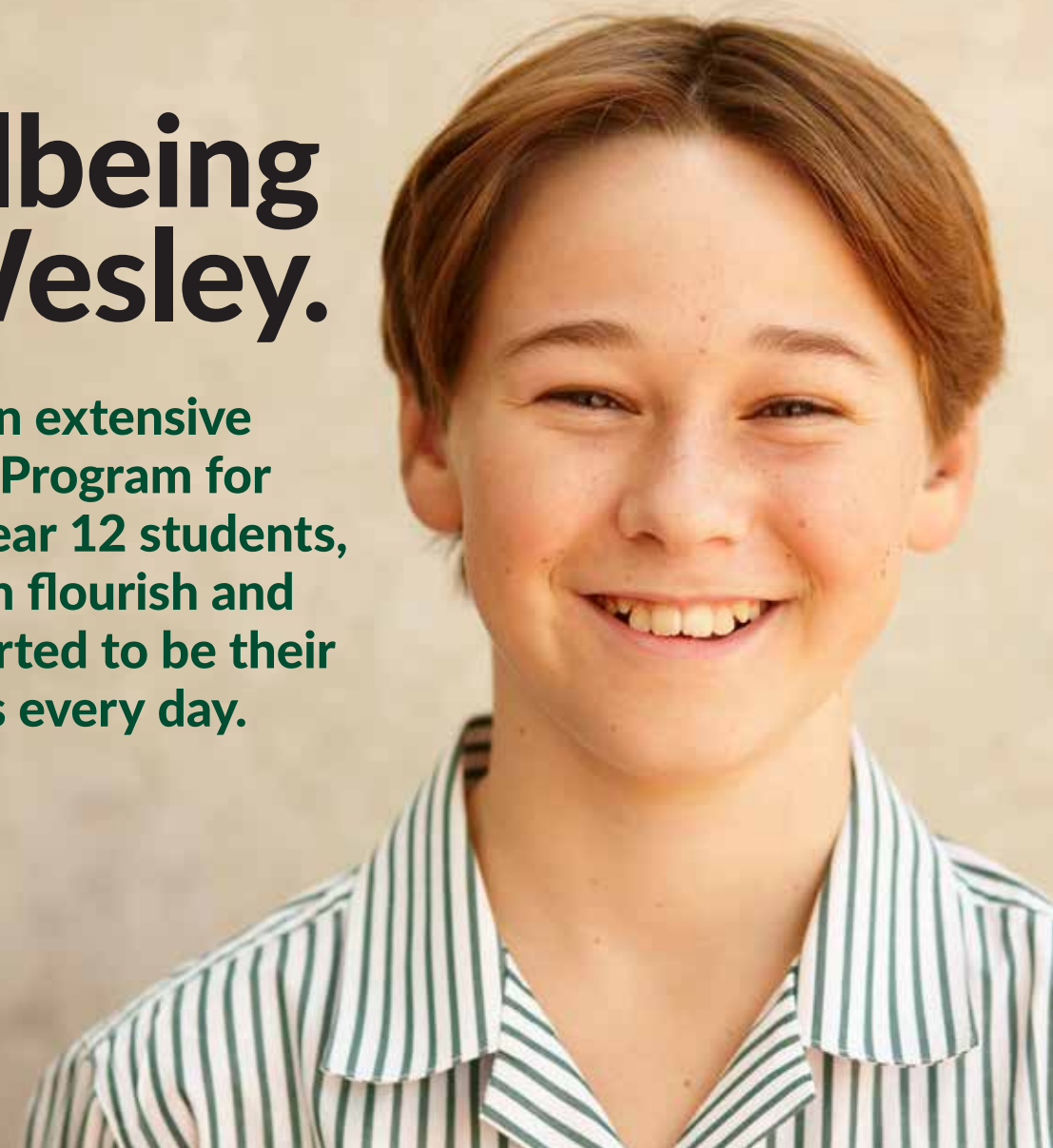
- Academic extension and enrichment
- Gifted and Talented
- Early intervention
- Learning difficulties
- Learning disabilities (as defined by the DDA)
- English as a Second Language or Additional Dialect
- Indigenous students

With the right levels of adjustment and support, both educationally and pastorally, students are encouraged to be independent and interdependent learners who are resilient, committed and confident in achieving their own potential.



# Wellbeing at Wesley.

**We have an extensive Wellbeing Program for Pre K to Year 12 students, so they can flourish and feel supported to be their best selves every day.**



Students have daily check-ins with experienced, dedicated staff and are exposed to a wide range of Wellbeing professionals to help wrap around and support each individual on their journey through Wesley, as well as ensuring they have access to networks and supports once they leave the College.

The Wellbeing Program has a dedicated period once a week which covers numerous elements of wellbeing aimed to develop our students understanding of the importance of lifelong wellbeing and develop toolkits and resources to allow them to care for themselves and for others, including:

- Self-awareness, reflection and mindfulness
- Self-regulation, and how to deal with the 'big' emotions
- Gratitude and resilience
- Online safety
- Respectful relationships
- Supporting friends and family
- Balanced, healthy lifestyles



# Academic excellence.

**Wesley College achieves outstanding results in all areas of academic endeavour thanks to a culture of high standards and a strong partnership between students, teachers and families.**

This starts in the Junior School with NAPLAN results that show Wesley to be consistently above state and national averages in all areas.

In the Senior School we offer students a choice of ATAR, General, Vocational Education Training (VET), and workplace learning (INSTEP) pathways.

The College works in partnership with students and parents to identify the most suitable pathway for each individual, with each option equally valued by the College and wider community.

Teachers support individual student choice through deliberate quality differentiation practices, continuous reporting practices, enriching learning and teaching programs, academic coaching and academic data tracking.

Of course, there is more to a Wesley education than the certification you leave with. The biggest result is to be found in the kind of students we produce. Young people with a well-balanced outlook and the empowerment to go out into the world and make a positive difference.



**2022 Dux of College, Ethan Kealley achieved the perfect ATAR score of 99.95. He was then awarded the UWA Lawrence Scholarship, where he is now studying a Combined Bachelor Master's degree in Frontier Physics.**

"The wide range of academic opportunities on offer at Wesley, as well as all the great teachers, definitely helped me to do as well in my ATAR exams as I did," Ethan acknowledges. "The Academic Evenings and Afternoons programs were very helpful times to get study done and seek assistance from teachers and past students."

Ethan also enjoyed the various co-curricular activities on offer – participating in the Da Vinci Decathlon for many years as well as World Scholar's Cup. "Those competitions definitely helped me to find my passions in Science and Maths, and were also great opportunities to further my learning," he says.



**Luke de Laeter was winner of the 2020 Beazley Medal: Vocational Education and Training (VET). The Beazley Medal is the highest honour a senior secondary student in Western Australia can receive.**

Just four years ago, Luke developed an interest in bees when his parents gave him a small hive for his birthday. Luke developed a clear vision for the future and put together a VET pathway to obtain a Certificate III in Beekeeping, Certificate III in Business, Certificate II in Visual Arts and a Certificate II in Information, Digital Media and Technology.

"I've visited more than 100 schools/events and 10,000 students and adults sharing the important link between bees and a sustainable future. Now I'm launching my new website BuzzEd Australia: Teaching the Importance of Bees, with online incursions and lesson plans," says Luke.

# The result.



# A sense of community.

Wesley's families are part of a vibrant community, enjoying a wide range of social events and fundraisers. The College also plays a key role in neighbourhood life too, with our Sports Club open to the public.



## OWCA

Whether your child attends Wesley for 12 months or 12 years, he or she automatically becomes a member of The Old Wesley Collegians' Association. Enjoy reunions, golf days, mentor programs, talks and networking events throughout the year.



## Events

From Space Night, to Nature Play, to Sunset Cinema, to Moorditj by Moonlight, to our annual Christmas Carols, we love hosting events with all of South Perth invited to join in!



## Wesleyana

Our Wesleyana Club is made up of mothers of former Wesley students. The club meets regularly at the College for social events, such as morning teas or guest talks.



## P&F

Wesley's Parents' & Friends' Association works continually to build community spirit with incredible events like the Mother's Day High Tea, quiz nights, sausage sizzles, sundowners, raffles and lunches.



## Sports Club

Finished the school run and feel like a swim? Or a gym workout? What about a quick yoga or Pilates lesson? Our Sports Club is open for Wesley parents — and the wider community — to enjoy.



## ANZAC Day

ANZAC Day sees Wesley host a beautiful service in the Chapel, inviting anyone who wishes to honour our fallen to join us in a moment of community remembrance.



## Talks

Our Auditorium plays host to all sorts of talks — from the Headmaster in conversation with fascinating people to experts guiding parents through the issues that all children face.



# DARE TO GROW.

**One of the many joys of Wesley is the flow of our campus. Our Junior School, Middle School and Senior School are positioned in a straight line, connected by a grassy 'Green Spine'. There is an intimacy to our campus that sees children of all ages crossing paths and looking out for each other as they grow.**





# JU

# NI

THE JUNIOR SCHOOL  
EMBRACES THE  
PHILOSOPHY THAT  
CO-EDUCATION IS  
IMPORTANT IN THE  
PRIMARY YEARS.



PRE-KINDERGARTEN  
TO YEAR 4  
CO-ED

# R.

Boys and girls learn from each other and establish important social and emotional building blocks when in a co-educational setting.

At Wesley's Junior School, students receive a balanced curriculum while being explicitly taught the foundation skills to be successful in literacy and numeracy. Simultaneously, they are exposed to an Inquiry program that provides them with opportunities to apply this knowledge, question, problem solve and think for themselves.

Every child is encouraged to be a kind and responsible person. The partnership between teachers and parents is highly valued and makes our community special.







## Our Head of Junior School.



**MRS JO EDINGER** BA(Ed), BEd MEDL  
Head of Junior School

OUR PURPOSE-BUILT PRE-KINDERGARTEN, KINDERGARTEN AND PRE-PRIMARY SPACES ARE WONDERFUL ENVIRONMENTS FOR CHILDREN TAKING THEIR FIRST STEPS IN SCHOOLING.



Since its construction in 2012, the Junior School Sustainability Garden has become one of the best-loved features of the Wesley campus. We have a dedicated Sustainability Teacher who takes great pleasure in introducing the children to our chickens and worm farms while helping them to tend to their own vegetable garden. Plus, make sure not to miss our regular market days where you can pick up a plant or two!



# MIDDLE

A WELCOMING,  
SAFE AND SECURE  
ENVIRONMENT  
THAT PROMOTES  
SELF-CONFIDENCE,  
INDEPENDENCE,  
ORGANISATION,  
SELF-MANAGEMENT,  
RESPONSIBILITY AND  
SELF-EXPRESSION.

YEARS 5 TO 6  
CO-ED

YEARS 7 TO 8  
BOYS ONLY

Supported by the expertise of a large team of staff dedicated to working with Years 5 to 8, Middle School is an exciting time for our young people to explore opportunities and grow. A structure that is purpose-built around the early adolescent phase is one that is full of spirit and energy; students at this age are learning about who they are and what they can do.

Our Middle School, with its subject specialist teaching and close teacher-child relationships, gives the security, stability and challenge that is critical for the growing self-confidence of emerging and developing adolescents. Together, we create a planned and smooth transition from the world of the primary classroom to the wider opportunities of the Senior School.







## Our Head of Middle School.



**MR BRAD HILLIARD**  
BAEd, P/GradCert Ed, CoGE, MEdStudies  
Head of Middle School

### Key learning principles in the Middle School include:

Strong relationships with tutors and specialist teachers where students are challenged to achieve their potential.

An emphasis on core learning areas staffed by teachers with specialist content expertise.

A focus on numeracy and literacy in the early Middle School years.

Integration of other learning areas with a focus on digital technology skills for use in a range of learning situations.

A student-directed approach to learning.

Ensuring learning is engaging and connected to real-life experiences.

Supporting the growth of independence and peer group orientation through collaboration.

Intellectual challenges linked to the Wesley Capabilities (the 7Cs).

Providing a balanced curriculum that encourages depth and links between learning areas and the various fields of human endeavour.



# SE

A CULTURE  
OF INNOVATION,  
CRITICAL THINKING  
AND COLLABORATION  
IS SUPPORTED BY  
OUR PURPOSE-BUILT  
LEARNING  
ENVIRONMENT.

# N

YEARS 9 TO 12  
BOYS ONLY

# R.

STUDENTS ARE TAUGHT  
BY EXPERIENCED TEACHERS  
WHO ARE SPECIALISTS IN  
THEIR AREA OF EXPERTISE.







## Our Head of Senior School.



**MS LYNETTE MCGIVERN**  
B.A Dip.Ed, LLB, M.Ed

**Senior School encourages our students to take greater responsibility for their learning and to become their own best advocate.**

Several times a year, students, parents and mentors engage in student-led conferences, where students are encouraged to lead the discussion around their academic goals, academic strengths and areas for improvement. These sit aside the more traditional subject-specific parent-teacher interviews.

The pastoral care structure in the senior years is designed to support every student in developing a close and consistent bond with at least one adult presence at the College. All mentors have approximately 12 students in their Mentor Group. Students are allocated their House-aligned mentor in Year 9 with the aim for them to remain with that mentor through to Year 12.

Working in pairs, mentors have responsibility for the overall wellbeing of students in their Mentor Group, with the Social and Emotional Learning (SEL) program facilitated as part of the mentor program.





# DARE TO GO FURTHER.

**Co-curricular.** At Wesley, we offer a rich array of co-curricular activities and experiences in the following areas: academic support, the arts, cultural engagement activities, outdoor learning, service learning and leadership, sport and STEAM. In all these areas, Wesley celebrates student commitment, leadership, service and excellence.





# Co-curricular offerings.



## ACADEMIC SUPPORT

- Academic Evening Program
- Design and Technology Access
- International Student Support Program
- Junior School Literacy Program
- Study Skills Academic Assistance NAPLAN and OLNA Intervention and Extension
- Years 5–6 Homework Club
- Years 5–8 Academic Afternoons

## ART AND DESIGN

- Arts Club
- Choirs
- Choral Speaking
- Design Club
- Drama Club
- Drama Productions
- Jazz Bands
- Middle School Drama Club
- Small Ensembles
- Speech and Drama
- String Orchestras
- Technical Club
- Theatre Sports
- Wind Bands

## OUTDOOR LEARNING

- Duke of Edinburgh
- Years 4–10 Outdoor Camps
- Year 7 Pre-Katitjin Camp
- Year 8 Katitjin — Morapoi Camp
- Year 9 Post Katitjin Camp
- Year 10 Outdoor Learning Program
- Year 11 Leadership Challenge

## STEAM CHALLENGE

- Chess
- Chess Club Years 2–6
- Coding Club Years 5–8
- Daring Tinkers Years 5–8
- EV Challenge
- F1 Challenge
- Junior School Art 'n' Ami
- Tin Horse Highway Years 7–8 Boarders

## ORATORY AND LITERARY PURSUITS

- Debating
- Mock Trial
- Model United Nations
- Public Speaking
- Socratic Society

## SERVICE AND LEADERSHIP

- Bike Rescue
- Cancer Council
- Community Garden
- Disabled Surfing
- Faith and Service Committee
- House Leadership
- Leukemia Foundation
- Prefect Leadership
- Red Cross Blood Ambassador
- Red Cross Soup Kitchen
- Relay for Life
- South Perth Senior Citizens Centre
- Student Representative Council
- Tangaroa Blue

## CULTURAL ENGAGEMENT

- Arts Camps
- French and Mandarin Languages
- Green & Black Ball
- House Activities
- Moorditj Mob Dance
- Socials
- Sporting Camps

## SPORT

- Athletics
- Australian Rules Football
- Badminton
- Basketball
- Breakpoint Tennis Year 3–4
- Cricket
- Cross Country
- Golf
- Hockey
- Pedal Prix
- Pro-Football PP–Year 4
- Rowing
- Rugby
- Soccer
- Strength and Conditioning
- Surfing
- Swimming
- Tennis
- Volleyball



# ARTS

**Wesley is a place where students are encouraged to explore their creativity and artistic talents. All students participate in music, drama, media, photography, dance and visual art during time at the College.**

In the Arts at Wesley, we believe that collaboration is key. As part of the collaboration in the Arts, staff and students work shoulder to shoulder with artists and leading figures in industry through new innovations such as the Arts Lab and Co-Lab.

Wesley Arts essentially becomes a conduit between the students and the artists who offer the opportunity for mentorship, networking and insight. As a result of these connections we are able to push the creative envelope and realise incredibly creative opportunities that the whole community can enjoy and be proud of.

Recent Drama productions have included: *Blood Brothers*, *Rent*, *Avenue Q – School Edition* – such offerings represent the daring nature of the Arts and our desire to challenge perceptions.

Our Art studios allow for everything from watercolours to mixed media, while our Media department has a full green screen studio for endless creative possibilities.

Music plays a meaningful role in life at Wesley. From Pre-kindergarten upwards, students are encouraged to engage with music. This is formalised in Year Five with all students required to learn an orchestral instrument for the year.

For students who elect to take up an instrument, we provide music-making at all levels, including a range of ensembles that allow plenty of performance opportunities.

Add in Dance, as well as Speech and Drama classes, and there is something for everyone.





# SPORTS

**Sport is a vital part of life at Wesley. It is compulsory across all three sub-schools. Participation in sport provides life skills beyond the enjoyment of the sport itself, including teamwork and developing healthy and active lifestyle habits that we hope will endure. We call it 'Sport for Life'.**

Wesley is proud to participate in Public Schools' Association (PSA) sports competitions. These events improve students' technical skills, physical capabilities and the associated social values. This process is complemented by the students' involvement in Inter-House sport, community-based sporting competitions and Physical Education programs.

Wesley's sport programs have been divided into the PSA competition for students from Years 7-12 and the Junior PSA (JPSA) competition for students in Years 5 and 6.

Summer sports include Athletics, Basketball, Cricket, Rowing, Swimming, Tennis, Water Polo and Volleyball (Years 7-12). There are also options for Golf and Surfing.

The winter season includes Badminton (Years 10-12), Cross-Country Running, Football, Hockey, Rugby and Soccer programs.

Year-round activities for students include Conditioning for Injured Athletes, Sports Challenge and UniGym.





# SERVICE LEARNING AND COMMUNITY SERVICE.

Service Learning at Wesley focuses on activities where both the recipient and the provider are the primary intended beneficiaries of the activity. This differs from our Community Service program where the recipient benefits, but without any intentional learning for the provider.

In addition to Service Learning, there is a strong tradition of Community Service at Wesley College, from Pre-kindergarten right through to Year 12. Notably, Wesley College has raised more than \$500,000 for the Cancer Council as a result of student participation in Relay for Life. Students also participate annually in the World's Greatest Shave and have nominated House charities to support, including RSPCA, Disabled Surfers Association, Red Cross Soup Patrol, Uniting WA, Ruah Homeless Centre and many others.



# STEAM CHALLENGE.

Wesley promotes STEAM activities and the disciplines of Science, Technology, Engineering, Arts and Mathematics. Our co-curricular offerings including Coding Clubs, da Vinci Decathlon, Daring Tinkers, EV challenge, F1 challenge, Mathematics Enrichment club and World Scholars Cup. Using an inquiry approach, students develop thinking and problem solving skills and apply them in different contexts. Students are encouraged to work in groups and prepare specific solutions to problems posed in sessions.



# ORATORY AND LITERARY PURSUITS.

Oratory and Literary pursuits at Wesley offers students a wide variety of experiences from debating and book club. Students are encouraged to develop team work and leadership skills as they navigate complex issues, construct argument and analyse texts.

Book club | Debating | Mock trials | SS Socratic Society | MS Socratic Society | Creative writing





# Adventure.

Run. Swim.  
Go up. Eat.  
Climb down.  
Sleep. Learn.

## Students participate in outdoor education from Years 5 to 10 in a comprehensive program managed by specialist outdoor education teachers.

Middle School students in Years 5, 6 and 7 are introduced to outdoor education camps at three different activity-centered, community-based campsites. These camps involve a series of group challenges within the context of a general theme, linking to the curriculum for each year group.

The Year 8 and 9 camps are designed to challenge students both physically and emotionally. The more experienced Year 10 students choose an expedition at an appropriately challenging level, developing competence in dealing with and travelling through the natural environment. These expedition opportunities have an emphasis on safety and organisation while enabling the students to experience some of WA's most remote, diverse and stunning geographic locations.

## Our annual camps.

✕ **Kalbarri**  
Year 10 Camp

✕ **Ern Halliday**  
Year 5 Camp

✕ **Nanga**  
Year 6 Camp  
Year 7 Camp

✕ **Great Southern**  
Year 9 Camp

✕ **Morapoi Station**  
Year 8 Camp  
(as part of Katitjin)



# DARE TO SOAR.

**Boarding at Wesley is something special. We offer our boarders (Years 7 to 12) a vibrant and nurturing environment. We strive to create a family-style community that encourages each boy's growth — supporting them as they become happy, responsible individuals.**





# Award-winning boarding.

In 2019 Wesley was awarded the title of *Boarding School of the Year*. What's the secret to our success?

“There is a warm, caring, relaxed environment in the Boarding House. I'm having the time of my life boarding at Wesley.”

BOARDER, YEAR 10

“When Wesley won the title of ‘Boarding School of the Year’ it wasn't a great surprise. We'd been thinking that for years.”

BOARDER, YEAR 9

“Being a boarder is like being part of a tightly woven spiritual group who make up the heart and soul of the Wesley Community.”

BOARDER, YEAR 12

It all starts with our unbeatable location, close to everything and yet away from the city: a safe home away from home.

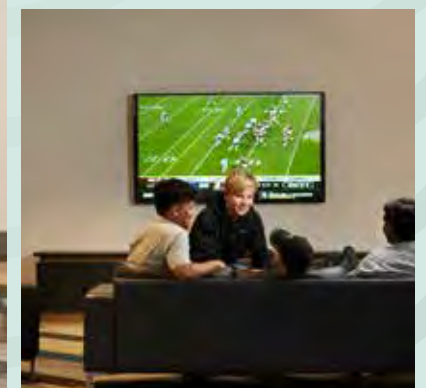
The Wesley Boarding House is situated within the College's beautiful South Perth campus, with ready access to the Swan River, the Angelo Street village and minutes from the ferry to Perth's CBD.

The local parklands, cycle paths and skate park, combined with the facilities of the Wesley Sports Club, ensure boarders have superb recreational opportunities that provide the necessary balance to the academic rigour of school and evening study.

Boys are cared for in a pastoral system based on year groups, with a year coordinator allocated

to each group. Our emphasis is to 'know the boy'. We develop positive relationships with each student, working in partnership with parents.

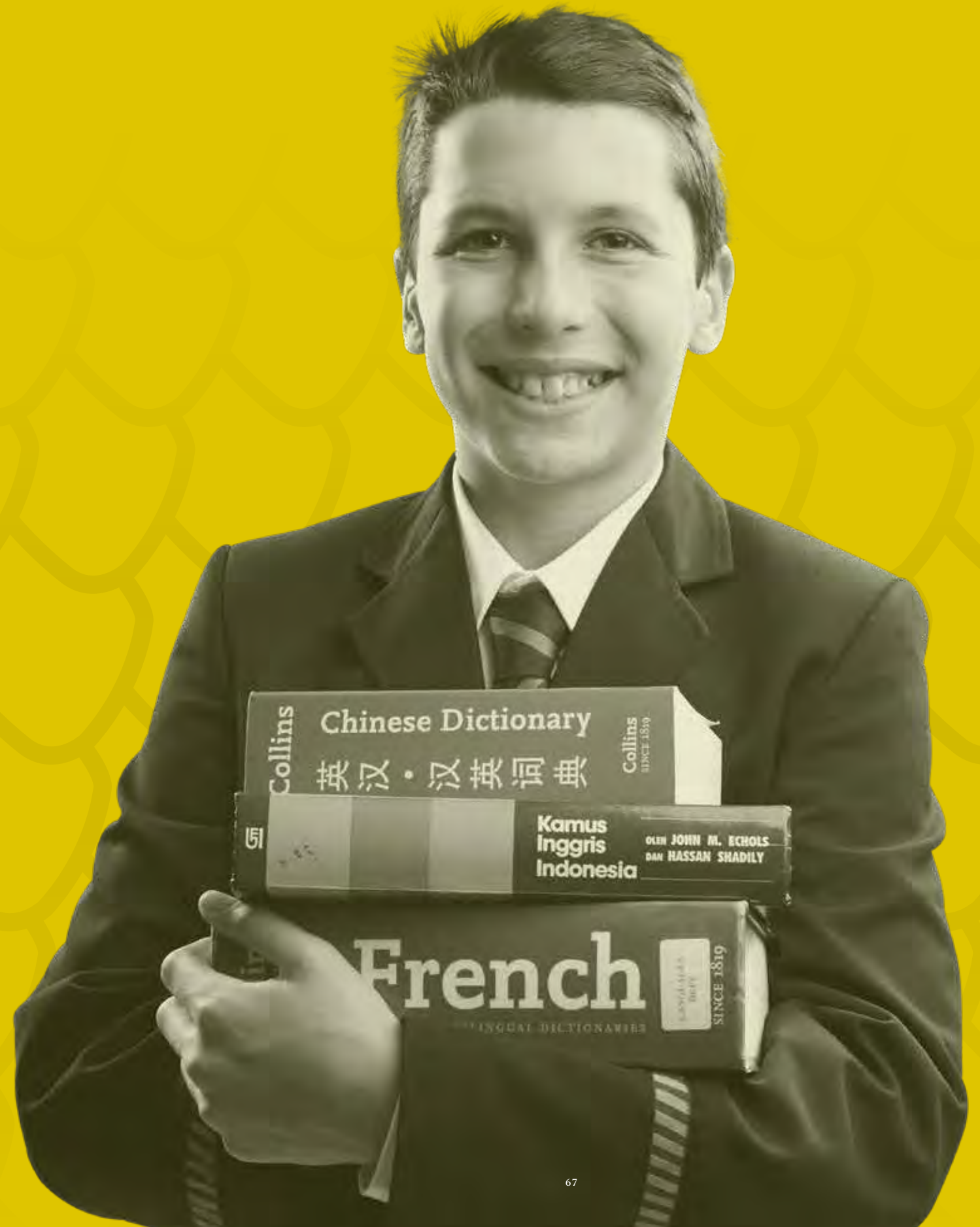
The academic experience for boys is supported by evening and weekend access to staff, tutors and state-of-the-art facilities including computers, classrooms and music practise rooms.





# DARE TO COMMIT.

**You've read what makes Wesley special, but a prospectus could never really capture the rich experience of life on our campus. So join us for a tour. Or, if you've already done that, please feel free to use the enrolment information overleaf. Whatever the next step looks like for your family, don't hesitate to get in touch. We're here to help!**





# Enrolling at Wesley.

If you have any questions or would like to know more about Wesley College, please contact the Enrolments Office.

Tour mornings are conducted regularly throughout the year. We would also be delighted to arrange an individual tour of the College at a time that suits you.

## ENROLLING YOUR CHILD.

Our Enrolments Managers are responsible for all new students from the first enquiry until the first day of school. In this way, we have the very latest information about your child which will enable us to welcome them into the full life of the College.

Wesley's inclusive enrolment policy means it is not essential for children to be interviewed prior to accepting a place at Wesley. However, we will happily arrange private meetings with the appropriate Head of School at your request.

## SCHOLARSHIPS AND BURSARIES.

In line with our Uniting Church ethos, Wesley College has a proud history of providing educational opportunities for students who would not normally have the means to attend the College.

Several needs-based bursaries are available to support a well-rounded and committed student who demonstrates sound academic achievement, but who otherwise would not have the opportunity to attend Wesley College. We embrace a diverse community and we all benefit from this.

Wesley College is also proud to offer a range of endowed scholarships for both academic accomplishment and general excellence. Academic scholarships are awarded to those students who perform exceptionally well in their examination and interview.

**CONTACT OUR ENROLMENTS TEAM:**

**Call** +61 8 9368 8032

**Email** [enrol@wesley.wa.edu.au](mailto:enrol@wesley.wa.edu.au)

**Website** [wesley.wa.edu.au](http://wesley.wa.edu.au)

# Student bus routes.





# We are Wesley.

## BOARDERS

There's a real sense of community in the Boarding House. We look after each other, like a family.  
BOARDER / YEAR 9

I'll never forget being a boarder here. I've made friends I'll have for the rest of my life.  
BOARDER / YEAR 11

## WESLEYANS

I had so much opportunity to get involved in things that I never had growing up in a small country town.  
FORMER STUDENT

Wesley is committed to developing well-rounded youth.  
FORMER STUDENT

I know wherever I may go in the future, I will continue to dare and to do — like so many before me — as a proud and strong Wesleyan.  
BEN ROSHKOV / 2019 COLLEGE CAPTAIN

## WESLEY TEAM

I'm continually impressed by the progressive teaching pedagogy the College adopts to ensure the best learning outcomes for the children.

MICHAEL CRANE / JUNIOR SCHOOL TEACHER

One of the many things staff and parents new to the College say to me is how they've noticed the strong sense of community that exists here.

BRAD HILLIARD / HEAD OF MIDDLE SCHOOL

I really enjoy working with motivated and like-minded colleagues and external coaches. We are a school that holds the best interests of the students first and foremost while promoting healthy habits for life.

LUKE DWYER / HEAD OF SPORT

Wesley is not just a place of learning, but a community of belonging and connection.

NATHAN JESSUP / DEPUTY HEAD (OPERATIONS AND PASTORAL)

We instil a pride to perform, in every arena, with a quiet determination to give it your all.

ROSS BARRON / HEAD OF COLLEGE

## PARENTS

You can see the respect and warmth between students and staff. Wesley just radiates a sense of being a welcoming place.

PROSPECTIVE PARENT

The quality of teaching is outstanding. My daughter comes home bursting to share the exciting things she's learned during the day.

CURRENT PARENT

Now that our son has graduated, we can really see how Wesley gave him the tools he needed for success.

FORMER PARENT

## STUDENTS

I was quite shy when I joined Wesley, but I was made to feel very welcome. The teachers were really kind and helped me find friends. Plus, they make their lessons fun!

STUDENT / YEAR 3

The technology the sports coaches use to measure our performance is amazing. It's like training with a professional team.

STUDENT / YEAR 5

Wesley is a genuinely happy, exciting place for children to grow up.

STUDENT / YEAR 10

# Our trophy cabinet.

## Recent awards:

**WINNER**  
AUSTRALIA'S MOST INNOVATIVE SCHOOLS  
*The Educator*

**FINALIST**  
EXCEPTIONAL CULTURAL CONNECTION BY A BOARDING SCHOOL OR RESIDENCE  
*Indigenous Education and Boarding Australia*

**WINNER**  
NATIONAL CHAMPIONS IN THE PROFESSIONAL CLASS  
*F1 in Schools STEM Challenge*

**WINNER**  
BOARDING SCHOOL OF THE YEAR  
*Australian Education Awards*

**WINNER**  
MR MATHEW IRVING  
HOT LIST 2022  
*The Educator*

CERTIFICATE OF EXCELLENCE IN EDUCATIONAL LEADERSHIP AWARD  
ACEL WA

**WINNER**  
MR KYAL REES  
SECONDARY TEACHER OF THE YEAR AWARD  
*Design and Technologies Teachers' Association of Australia*

**WINNER**  
MR MIKE FILER  
OUTSTANDING SERVICE AWARD  
*Professional Teaching Council of Western Australia*

**WINNER**  
MILDRED MANNING  
SCIENCE CENTRE AWARD FOR EDUCATIONAL ARCHITECTURE  
*Architects Institute of Australia, Western Australia*











WESLEY COLLEGE  
By daring & by doing

Corner of Coode and Angelo Streets South Perth WA 6151  
PO Box 8360 Angelo St South Perth WA 6151 | +61 8 9368 8000  
centralreception@wesley.wa.edu.au [wesley.wa.edu.au](http://wesley.wa.edu.au)